

Announcing! 2016 Control Magazine Selects Hardy as a Top Supplier of Weighing Systems

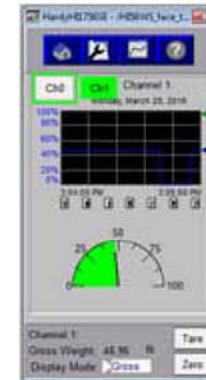
Hardy Process Solutions has been honored again as a top supplier in Control Magazine's 2016 Readers Choice Awards. The annual awards are based on the input of more than 1,000 global Control subscribers, who nominate suppliers based on their real-world experience with specific products and brands. The open-ended survey presents a series of questions about preferred vendors in 80+ categories.

[Read more](#)



NEW! Free & Easy-to-Use Faceplates for Rockwell® PLC Plug-In Weigh Scale Models

Hardy Process Solutions announces free Faceplates/AOIs designed for FactoryTalk® View. Hardy's pre-programmed and pre-tested Faceplates/AOIs make use of tags for controllers and graphics for HMIs, which can reduce GUI development time by 50 to 90%. Now OEMs and Systems Integrators can configure, commission, operate and display weigh scale module information without writing a single line of code. [Get More Information](#)



Download Faceplates for both ME and SE on our [Rockwell Premier Integration Solutions Page](#)

NEW! Set-Up Wizard Now Included with Weight Processors

Hardy Process Solutions now provides a Set-Up Wizard for its HI 6500 and HI 6300 Weight Processors that greatly reduces the setup time and complexity typical of industrial weight processors. The Set-Up Wizard automatically launches when the instrument is powered up, and is designed to help even beginners succeed at producing fast stable weight data – without having to read a lengthy product manual. [Click Here For More Information](#)



Durable, Reliable Hardy Floor Scales Now Offered in Custom Sizes

For Industrial Weighing & Washdown Applications

Hardy Process Solutions now offers custom sizes for Hardy Floor Scales and Hardy Lift Deck Floor Scales. These process weighing scales combine best-in-class durability with Hardy's Process Toolbox features: weightless calibration (C2®) and operator diagnostics (Integrated Technician®). Hardy Lift Deck Floor Scales offer OEMs and System Integrators multiple ways to reduce their integration costs and downtime. [Click Here for More Information](#)



Ask Hardy: When do I use zero or tare?

These two functions sound quite similar, but here's the difference:

ZERO - Actually moves the scale's GROSS zero reference. You've told the scale that the zero reference is now different.

TARE - Removes the container NET weight from your Gross weight value without changing the zero reference point.

Remember: Net Weight equals Gross Weight minus Tare Weight. Your application will dictate whether you should use the Tare or Zero command. [Click Here to Learn More About ZERO and TARE](#)



Get Connected: If You Haven't Connected with Us on Facebook, LinkedIn & YouTube, Do it Today!

Keep updated on all our latest products, technology, training, money saving tips and more by following us on our Social Media sites. Sign up today and find out what Hardy Process Solutions can do for you and your operation.

Find Hardy on: [Facebook](#) [LinkedIn](#) [YouTube](#)



Easy Weighing Solutions - Delivering Least Total Cost

