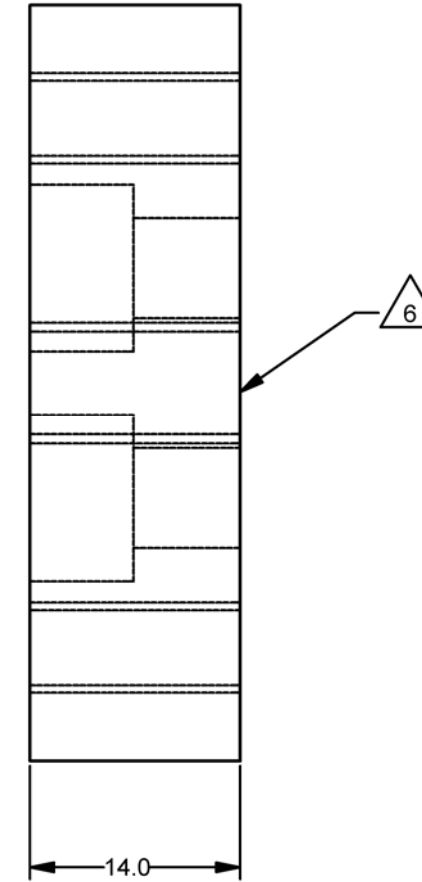
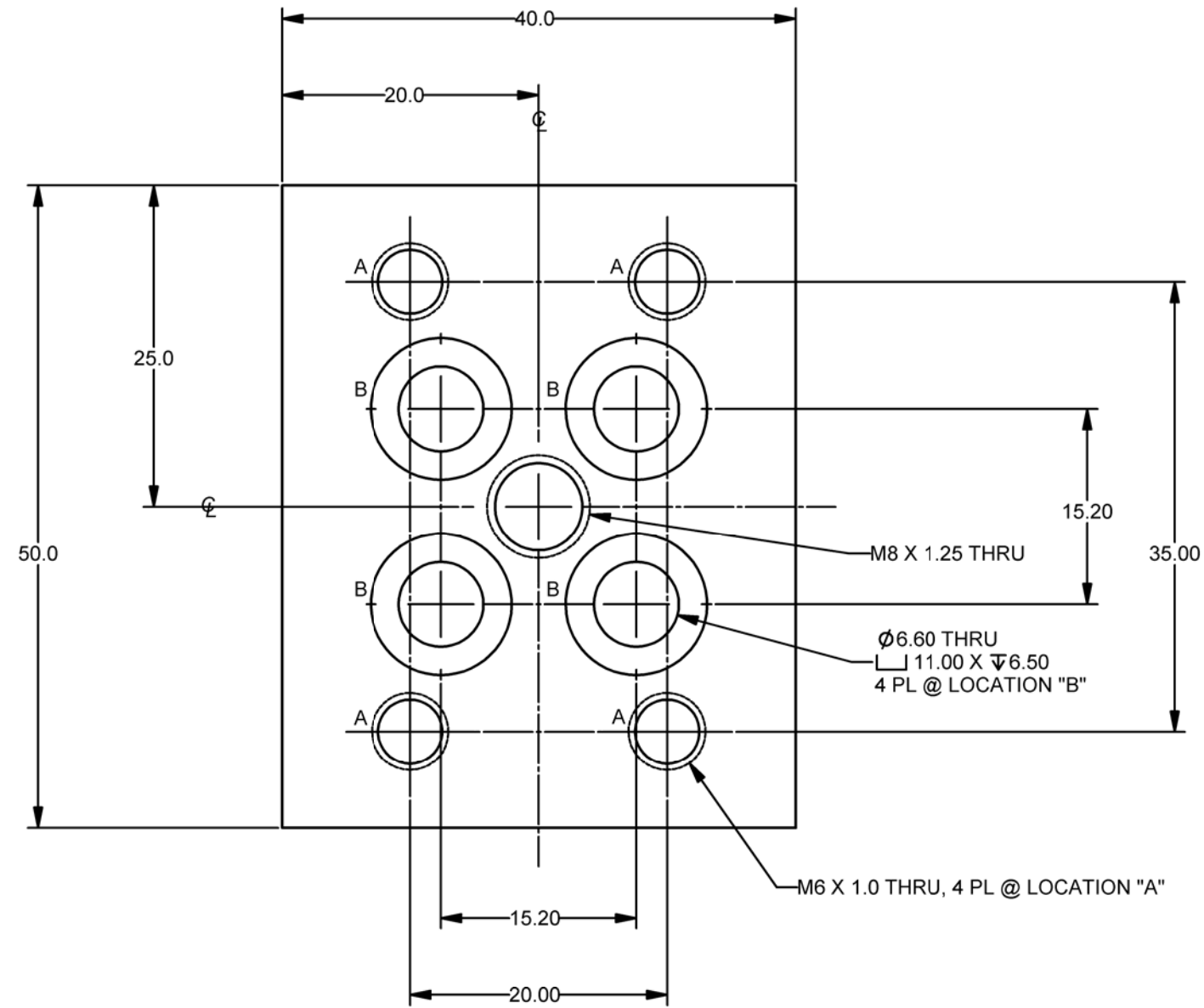


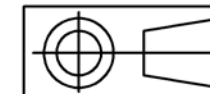
REV.	ECO/DDC	DESCRIPTION	DATE	DRAFT	CHECK	APVD
A	----	RELEASED.			V.J.C.	



- 6 IDENTIFY WITH PART NUMBER, INCLUDING DASH NUMBER, AND CURRENT REVISION LETTER IN AN INDELIBLE CONTRASTING COLOR ON SURFACE INDICATED, OR BAG AND TAG.
- 5. REMOVE BURRS AND BREAK SHARP EDGES 0.5MM-0.8MM.
- 4. DIMENSIONS ARE SYMMETRICAL ABOUT CENTERLINES (CL).
- 3. ALL MATERIALS USED IN THE CONSTRUCTION OF THIS COMPONENT MUST BE COMPLIANT TO HARDY ENVIRONMENTAL QUALITY ASSURANCE PROCUREMENT PROVISION STATEMENT DOCUMENT 0599-0150.
- 2 FINISH: JITTERBUG ALL EXTERIOR SURFACES USING 120 GRIT PAPER, #2 WIRE BRUSH OR MEDIA BLAST.
- 1 MATERIAL: 17-4PH STAINLESS STEEL (SAE 630/DIN1.4548).

NOTES: UNLESS OTHERWISE SPECIFIED

PROPRIETARY NOTICE
ALL DATA AND INFORMATION CONTAINED IN OR DISCLOSED BY THIS DOCUMENT IS CONFIDENTIAL AND PROPRIETARY INFORMATION OF HARDY PROCESS SOLUTIONS AND ALL RIGHTS THEREIN ARE EXPRESSLY RESERVED. BY ACCEPTING THIS MATERIAL THE RECIPIENT AGREES THAT THIS MATERIAL AND THE INFORMATION CONTAINED THEREIN IS HELD IN CONFIDENCE AND IN TRUST AND SHALL NOT BE USED, COPIED, REPRODUCED IN WHOLE OR IN PART, NOR ITS CONTENTS REVEALED IN ANY MANNER TO OTHERS, EXCEPT TO MEET THE SPECIFIC PURPOSE FOR WHICH IT WAS DELIVERED.



		0526-0184-01-0	ADAPTER PLATE, LOAD SENSOR, DCSPSS15 TO SP6, TOP	SEE NOTES
ITEM	QTY	PART NUMBER	DESCRIPTION	COMMENTS
PARTS LIST				
UNLESS OTHERWISE SPECIFIED DIMENSIONS ARE IN MILLIMETERS (MM) TOLERANCES ARE: DECIMALS: .XX = ±0.5 .XXX = ±0.25 ANGLES ±0°, 30'		CONTRACT NO.		HARDY PROCESS SOLUTIONS
		APPROVALS		
MATERIAL		DRAWN V. CHULA	DATE 02-02-22	TITLE ADAPTER PLATE, LOAD SENSOR, DCSPSS15 TO SP6, TOP
FINISH		CHECKED	DATE	SIZE D
DO NOT SCALE DRAWING		APPROVED	DATE	FSCM 21316
		ISSUED	DATE	DRAWING NO. 0526-0185-0
		PRODUCTION	DATE	REV. A
		FILE NAME: 0526-0185-0A1.SLDDRW		SCALE: NONE
		SHEET 1		OF 1