

Process Weighing

Vibration Monitoring

Local Field Service

## TECHNICAL NOTE

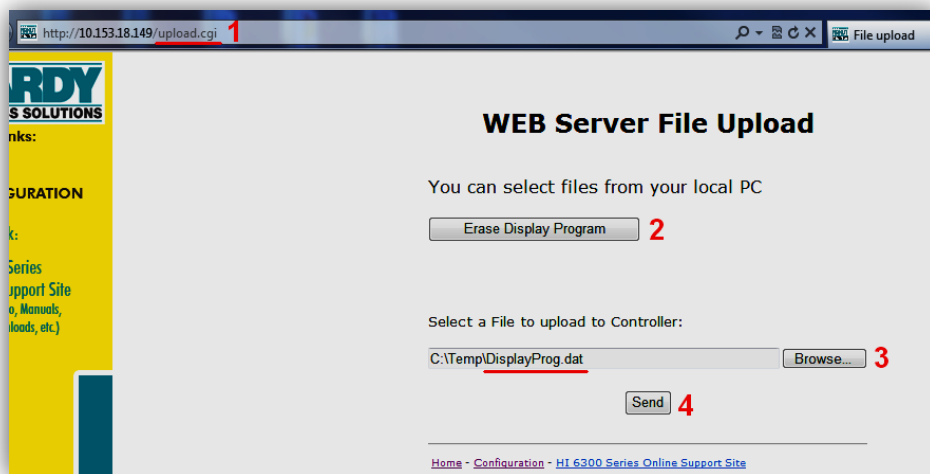
---

### *HI6110 Base Line Display Firmware Update Instructions*

The HI6110 Base Line Display firmware is upgraded through the web server interface provided by an attached HI6300 or HI6310 Weight Processor.

Connect the display to the Weight Processor. Connect the weight processor directly to your PC or your network via its Ethernet port. Please refer to your Weight Processor or Display manual for instructions on setting up network communications.

1. Open Internet Explorer and navigate to the following URL, replacing **<WP\_IP>** with the IP address your weight processor is currently set to.  
**http://<WP\_IP>/upload.cgi**
2. Click the **"Erase Display Program"** button to erase the display firmware currently loaded in the Weight Processor.
3. Use the file selection dialog to find the **"DisplayProg.dat"** file on your PC that accompanied these instructions.
4. Click the **"Send"** button to begin uploading the program.



The Display will automatically reset and a progress bar will be displayed indicating the status of the firmware upload from the Weight Processor to the Display. The progress bar may begin a 2<sup>nd</sup> time. When the upload is complete the Display will reset. The version of the firmware can be verified on the **Information** page in its menus.