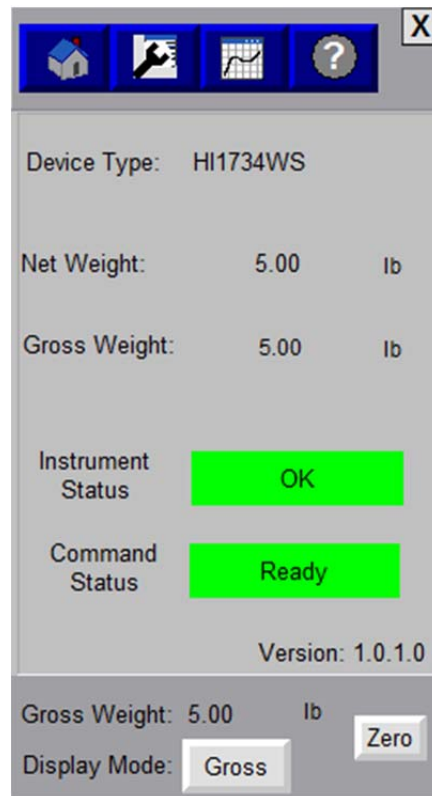


Guidelines for Installing HI 1734-WS Faceplates



ATTENTION: Faceplates provided by Hardy Process Solutions are open source, unlocked, HMI templates that may be downloaded from the Hardy website for free. All open source software, code and scripts are provided as-is and Hardy does not warranty or provide any technical support for open source software, code or scripts. As such, Hardy assumes no liability for potential harm or damage, software or hardware, which may result from the use of open source software, code or scripts. Furthermore, Hardy assumes no responsibility for their content or operation in any particular environment. Software, code and scripts are provided as examples only and will likely need to be modified for your particular use.

For further technical support installing, using, or modifying Faceplates; contact your nearest Rockwell Automation Technical Support Center.

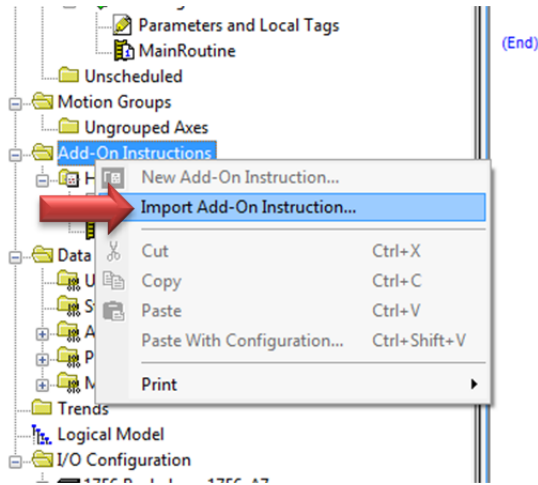
SE Edition Instructions: Page 2

ME Edition Instructions: Page 9

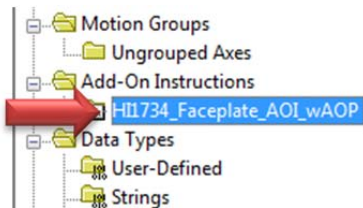
SE Edition of the Faceplate

Importing Add On Instructions (AOI) into RSLogix® 5000

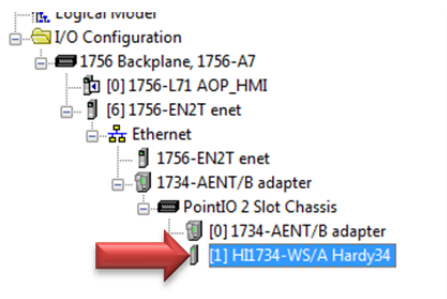
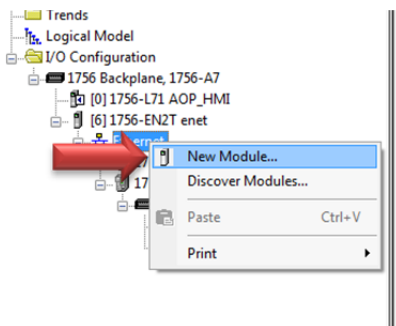
- Right click “Add-On Instructions” and Import the downloaded Faceplate L5X file into your project.



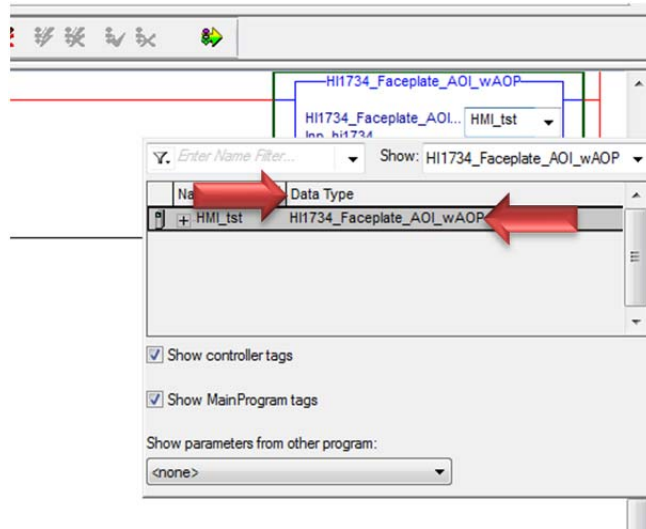
- It should now appear under Add-On Instructions.



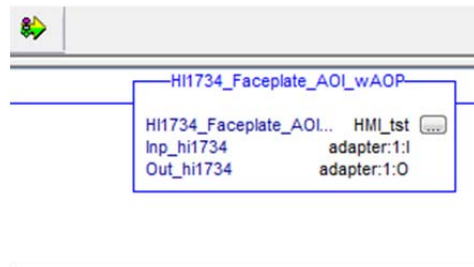
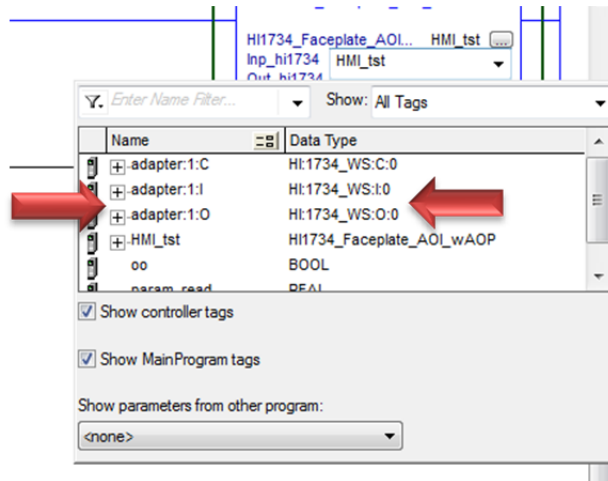
- Right click and click on New Module to add the HI1734-WS to the I/O configuration structure.



- Add the Add-On Instruction onto a rung.
- Create the instruction tags. This will be an Add-On data type that matches the Add-on instruction.



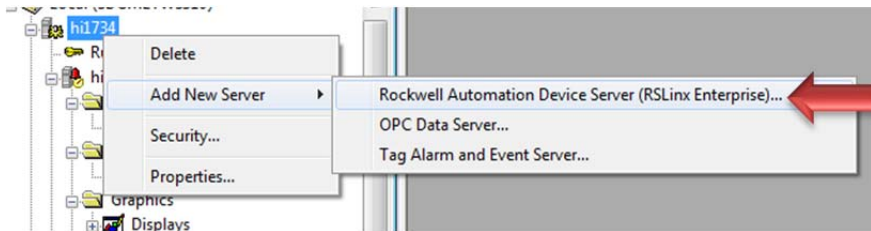
- Inp_hi1734: Associate this label with the Input table for the HI1734-WS.
- Out_hi1734: Associate this label with the Output table for the HI1734-WS.



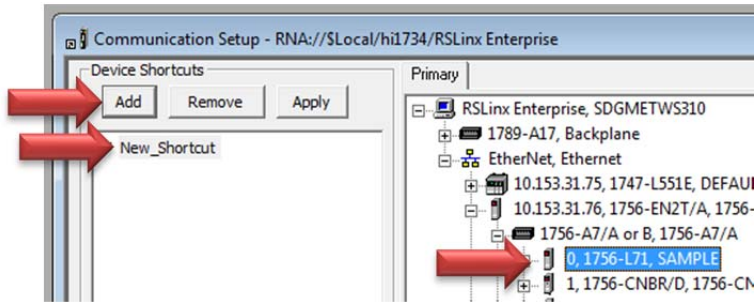
- Add additional AOI instructions into the main routine for each HI 1734-WS unit.
- Save your project and download it to the PLC.

Importing Hardy Faceplates into FactoryTalk™ View SE

- Open FactoryTalk Studio View Site Edition
- Create a new application.
- Add communication in FactoryTalk to create a link between FactoryTalk and RSLogix5000
- Right click on the project name in the explorer navigation bar.
- Add a new Rockwell Automation Device Server

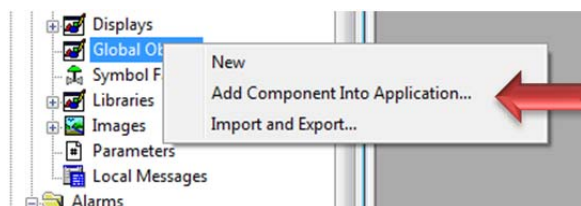


- Add, name and choose a path to your controller.



- Click Apply and OK to create the shortcut.
- When complete, this process will link the tags from the AOI in RSlogix to the tags in FactoryTalk.

- Import the Faceplate file into FactoryTalk as a Global Object
 - Right click on Global Objects and click on 'Add Component into Application', look for the Faceplate files (Hardy_HI1734_SE.ggfx and Default Selection.ggfx) to add them under global objects.

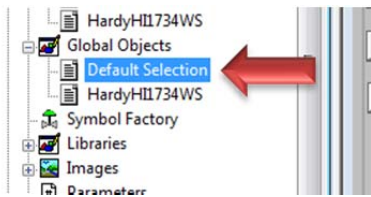


- If multiple HI 1734 weigh scale modules are used, make copies of the Hardy_HI1734_SE.ggfx files and assign different names for each module.

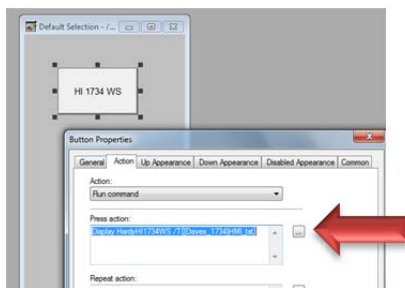
- Global objects can be modified allowing customization of the Faceplate to meet specific user requirements; for example if only a weight reading is required, a user can grab the object and move it to another custom display that has already been created.
 - Save changes of any modifications before exiting the program.
- To add Faceplates to a display, right click on Displays, and then click on 'Add Component into Application'.

If no changes were made to the Global Object files, add the same two files into the Display section. **If changes were made to Global Object files, save before adding to the Display section.** Changed files to add to the Display section should be found in the directory where saved (Typically c:/users/public/Public Documents/RSView Enterprise/SE/HMI Projects/<project name>/Global Objects)

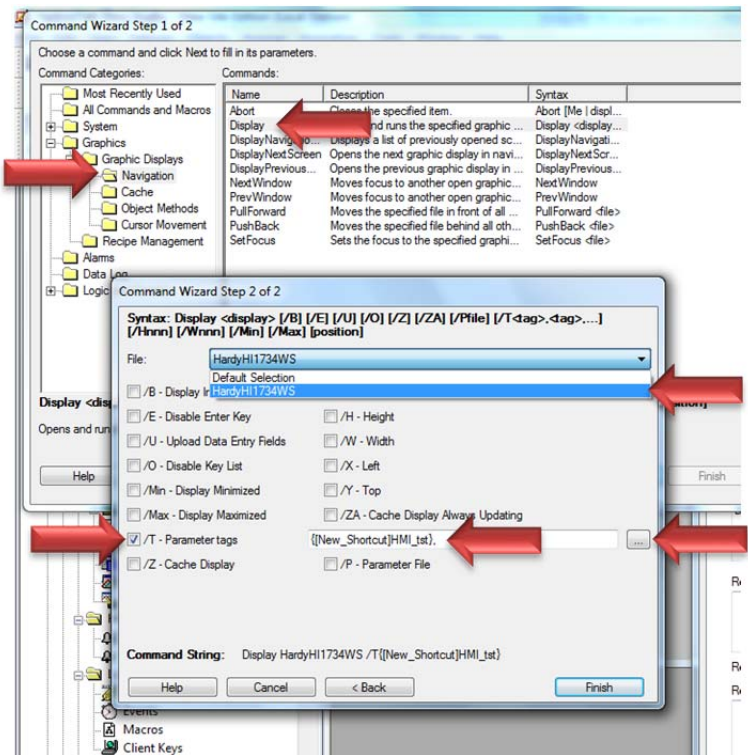
- If using the Default Selection display file, changes should be made to the button properties to ensure they point to the proper units.
- Double click to open the "Default Selection" Global Object.



- Right click on the HI1734-WS button to set up. Then click on properties. Under the "Action" tab, under the "press action" text box, delete any of the contents.



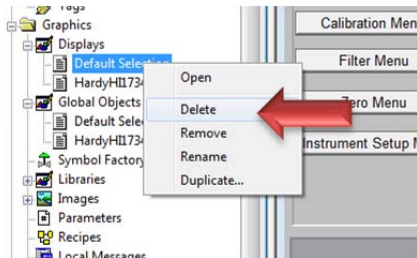
- Click on the ... to the right of the "press action" box. Go to the All Commands and Macros, scroll down to "Display". Double click on Display. Select the file name of your HI 1734 Faceplate.



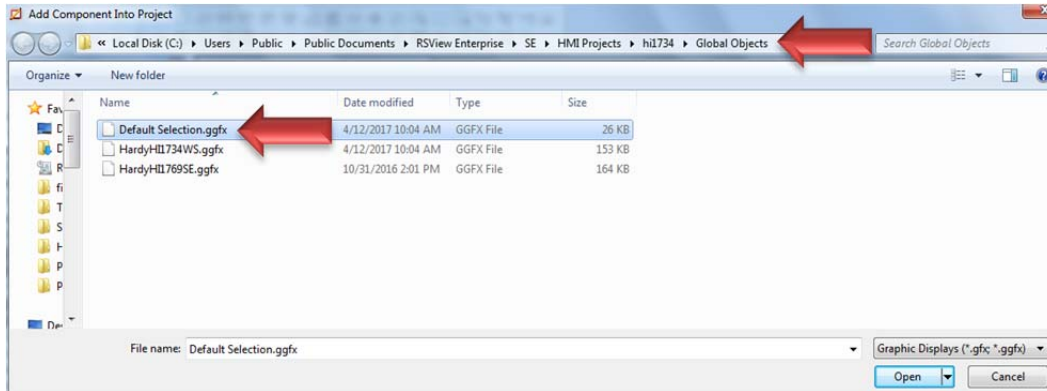
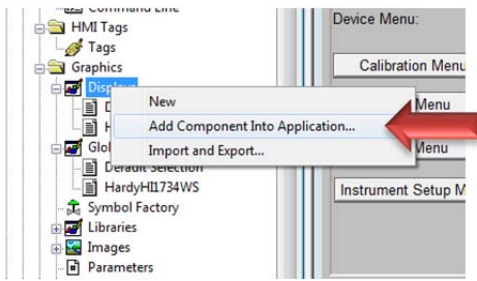
- Check the /T Parameters tags check box, Click on the ... to the right.
- Select the tags from the correct AOI under the “select Tags>Folder” list. (Folders may need to be refreshed). Click OK and Finish to close the windows.
- Click Save.

Delete the Default Selection Display and add the newly saved display.

- Right click and delete the “Default Selection” display under the Display section.

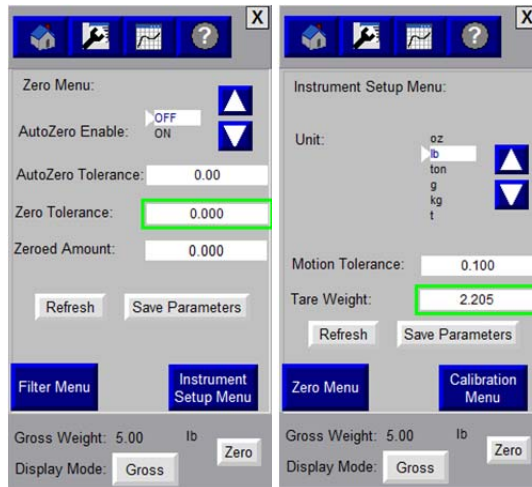
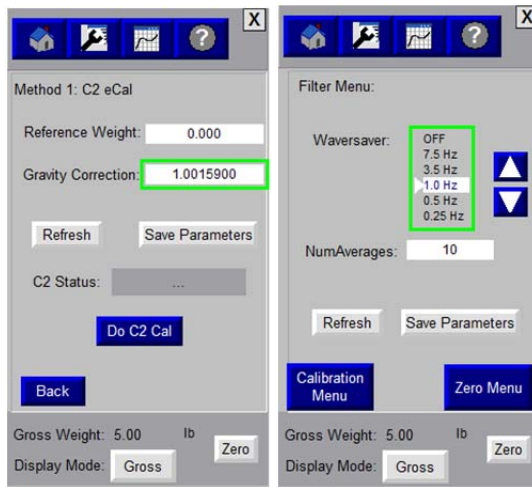
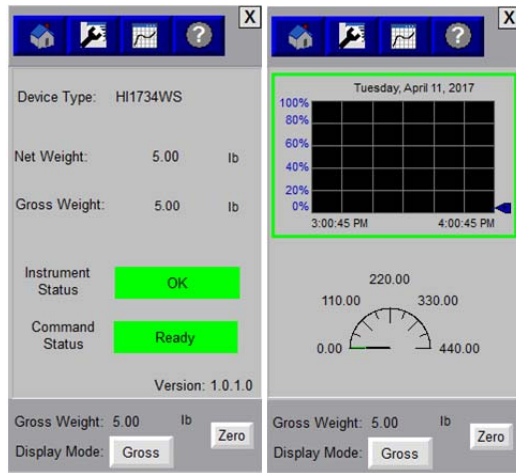


- Right click “Displays” and add the “Default Selection” file found under the C:/Users/Public/Public Documents/RSView Enterprise/SE/HMI Projects/<project name>/Global Objects directory.



- Create a FactoryTalk View Site Edition
 - Open FactoryTalk View Site Edition Client application
 - Create a new project.
 - Select Local Station.
 - Under Name of Application, select the application you created in the previous section to connect to.
 - Select the Initial Display to be “Default Selection” and click next.
 - Click next, next, then finish.
 - Project will now start up and the Faceplate should come up in a test environment.

- Navigating the Faceplate
 - Navigate the Faceplate using the mouse and keyboard to enter values.

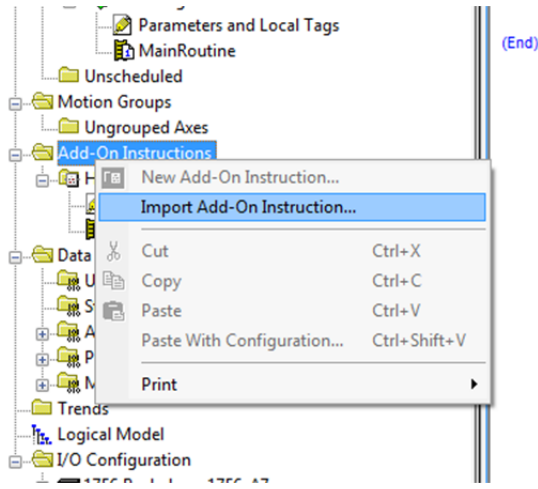


Figures 7-16

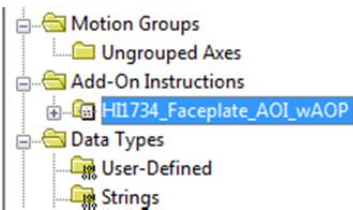
ME Edition of the Faceplate

Importing Add-On-Instructions (AOI) into RSLogix® 5000

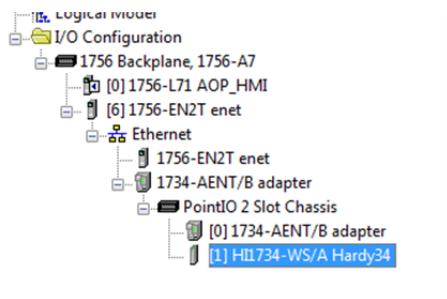
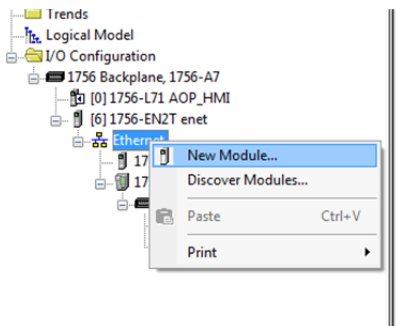
- Right click “Add-On Instructions” and Import the Faceplate L5X file into your project.



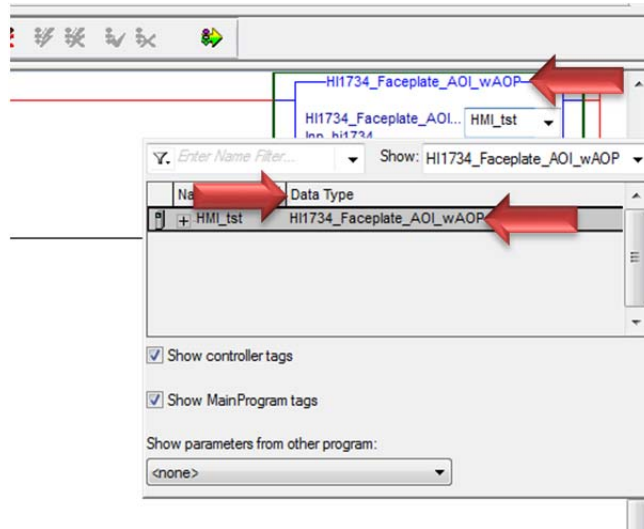
- It should now appear under Add-On-Instructions.



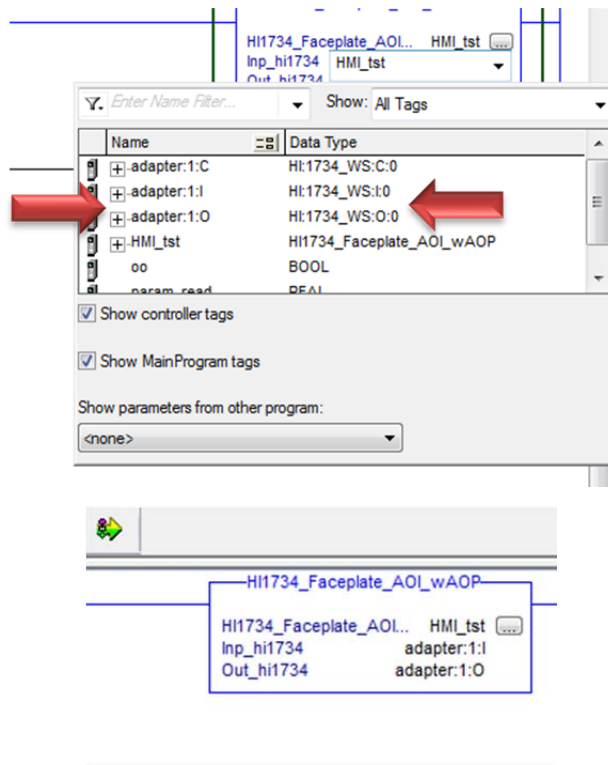
- Right click and click on New Module to add the HI1734 to the I/O configuration structure.



- Add the Add-On-Instruction onto a rung.
- Create the instruction tags. This will be an Add-On data type that matches the Add-on-Instruction.



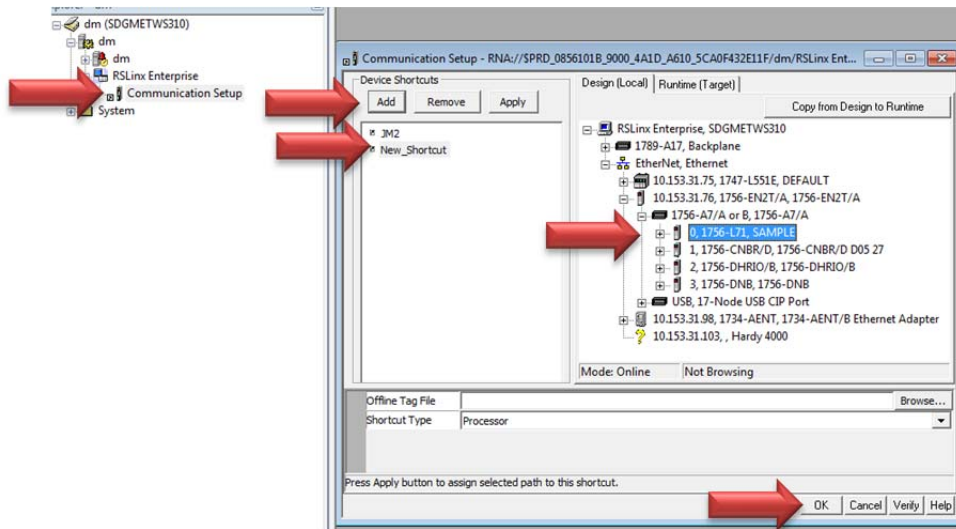
- Inp_hi1734: Associate this label with the Input table for the HI1734.
- Out_hi1734: Associate this label with the Output table for the HI1734.



- Add additional AOI instructions into the main routine for each HI1734 unit.
- Save your project and download it to the PLC.

Importing Hardy Faceplates into FactoryTalk View ME

- Open FactoryTalk Studio. Select Machine Edition
- Create a new application.
- Add communication in FactoryTalk to create a link between FactoryTalk and RSLogix5000
 - RS Linx Enterprise already appears in the project tree. Expand and double-click on the “communication setup”.
 - Under device shortcuts, add a new shortcut.
 - In the PRIMARY window expand the driver, highlight the processor and click ok then yes to apply changes.



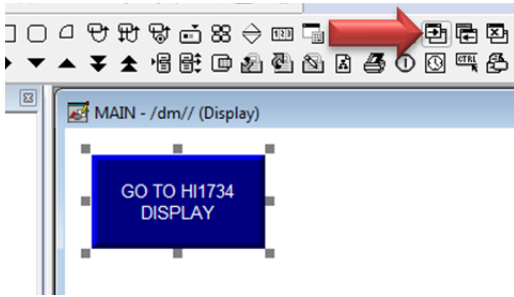
- When complete, this process will link the tags from the AOI in RSlogix to the tags in FactoryTalk.

Importing the Faceplate Global Object

- Import the Faceplate file into FactoryTalk as a Global Object
 - Right click on Global Objects and click on ‘Add Component into Application’, look for the Faceplate file (Hardy_HI1734_ ME.ggfx to add under global objects. If multiple HI 1734 instruments are used, make copies of the file and assign different names for each instrument.
 - Global objects can be modified allowing customization of the Faceplate to meet specific user requirements; for example if only a weight reading is required, a user can grab the object and move it to another custom display that has already been created.
 - Save changes of any modifications before exiting the program.
 - If no changes were made to the Global Object files, add the same file into the Display section. **If changes were made to Global Object files, save before adding to the Display section.** Changed files to add to the Display section should be found in the directory

where saved (typically c:/users/public/Public Documents/RSView Enterprise/ME/HMI Projects/<project name>/Global Objects.

- Users will need to add a “GOTO Display button”



In the properties box for the button, set:

- Display field to the Hardy display.
- Parameter LIST set to the Logix AOI folder.

