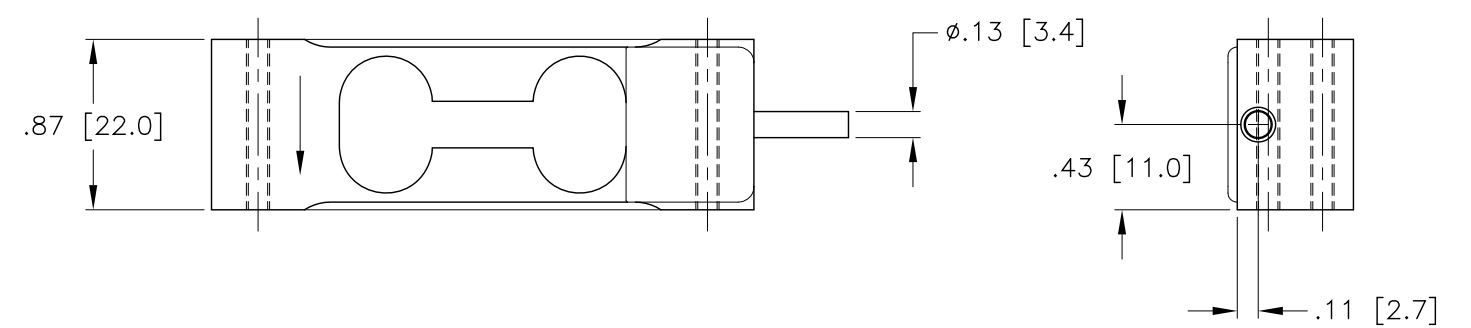
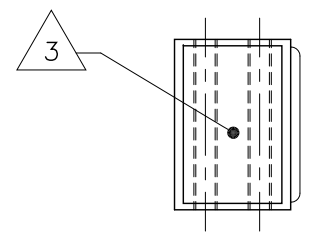
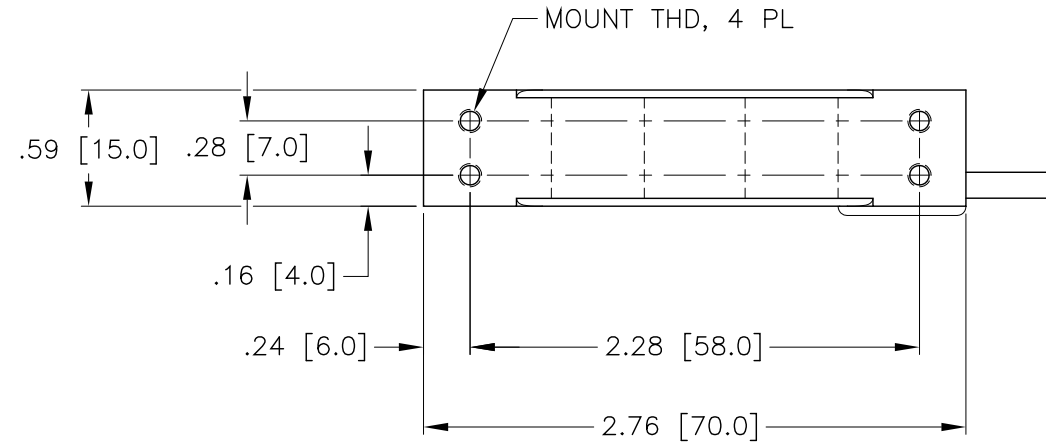


**DIMENSIONS— INCHES & [mm]**

REV.	ECO/DDC	DESCRIPTION	DATE	DRAFT	CHECK	APV'D
A	----	RELEASED.	10-09-14	V.J.C.	N.H.S.	E.J.

MODEL NUMBER	CAPACITY KG	MOUNT THD	CABLE LENGTH FT [M]
HI SPL-600G	600G	M3 X 0.5	1.6FT [0.5M]
HI SPL-1KG	1KG		1.6FT [0.5M]
HI SPL-2KG	2KG		8.2FT [2.5M]
HI SPL-3KG	3KG		1.6FT [0.5M]

TOLERANCES: ±0.01 [0.3] UNLESS OTHERWISE STATED



9. SEE SHEET 2 FOR FULL SCALE 2 DIMENSIONAL DROP-IN CAD FILE VIEWS.
8. LOAD CELL OPERATING TEMPERATURE RATING IS -20°C TO +60°C. USAGE OF LOAD CELL AT TEMPERATURES BELOW -20°C REQUIRES THAT THE LOAD CELL AND CABLE BE TEMPERATURE CONTROLLED.
7. LOAD CELL IS ANODIZED ALUMINUM.
6. CABLE IS SHIELDED 4 CONDUCTOR. CABLE SHIELD IS FLOATING. SEE TABLE FOR CABLE LENGTHS.
5. LOAD CELL COLOR CODE:
 

EXCITATION +	RED
EXCITATION -	BLACK
SIGNAL +	GREEN
SIGNAL -	WHITE

4. CABLE WIRE ENDS ARE STRIPPED BACK AND TINNED.

LOCATION OF MODEL/SERIAL NUMBER LABEL.

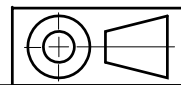
2. THIS DRAWING IS SUBJECT TO CHANGE WITHOUT NOTICE.

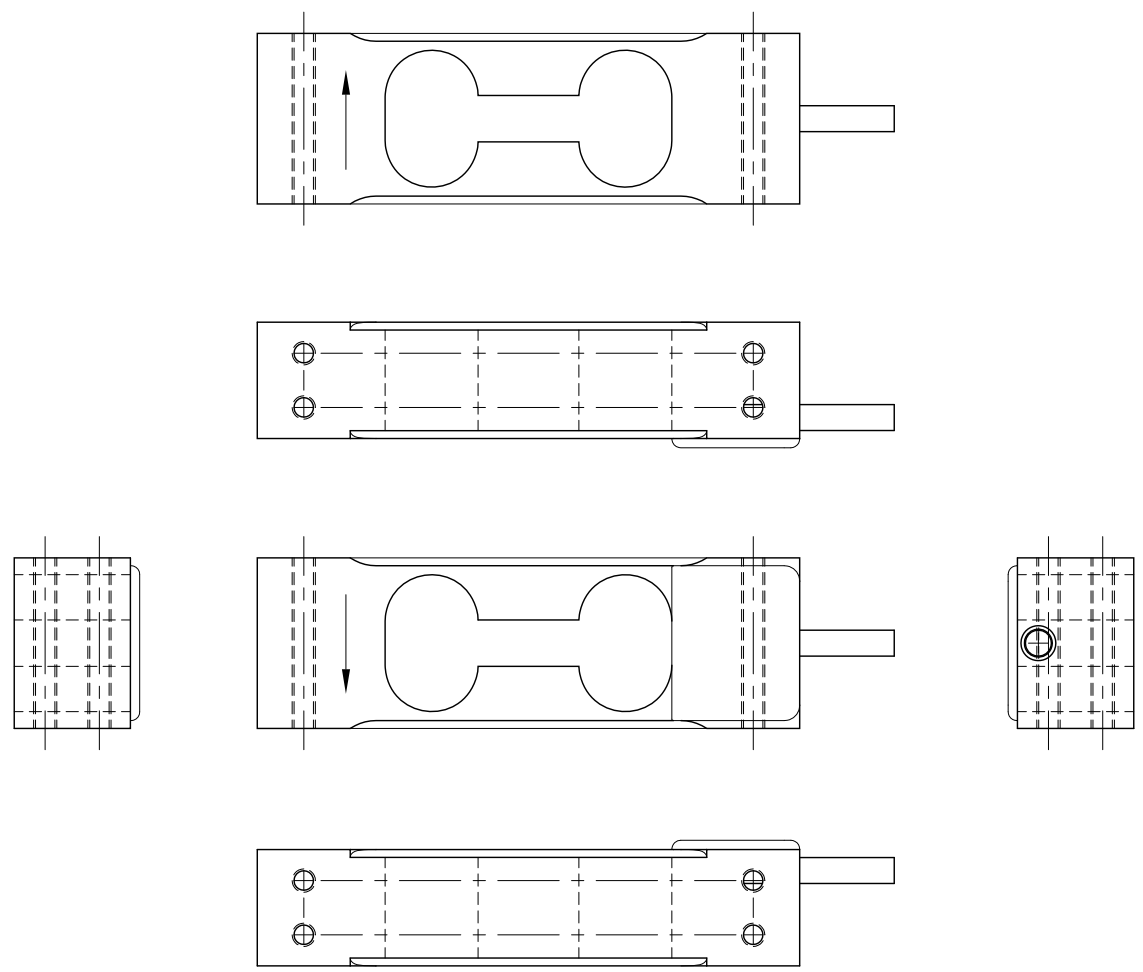
1. RATED OUTPUT: 2mV/V ±10%.

**NOTES: UNLESS OTHERWISE SPECIFIED**

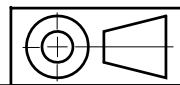
PROPRIETARY NOTICE  
ALL DATA AND INFORMATION CONTAINED IN OR DISCLOSED BY THIS DOCUMENT IS CONFIDENTIAL AND PROPRIETARY INFORMATION OF HARDY PROCESS SOLUTIONS INC. AND ALL RIGHTS THEREIN ARE EXPRESSLY RESERVED. BY ACCEPTING THIS MATERIAL THE RECIPIENT AGREES THAT THIS MATERIAL AND THE INFORMATION CONTAINED THEREIN IS HELD IN CONFIDENCE AND IN TRUST AND SHALL NOT BE USED, COPIED, REPRODUCED IN WHOLE OR IN PART, NOR ITS CONTENTS REVEALED IN ANY MANNER TO OTHERS, EXCEPT TO MEET THE SPECIFIC PURPOSE FOR WHICH IT WAS DELIVERED.

		0588-0164	OUTLINE DRAWING, LOAD CELL, HI SPL SERIES				
ITEM	QTY	PART NUMBER	DESCRIPTION	COMMENTS			
PARTS LIST							
UNLESS OTHERWISE SPECIFIED DIMENSIONS ARE IN INCHES [MM] TOLERANCES ARE: DECIMALS: .XX = ±.01 [.25] .XXX = N/A ANGLES: ±0°, 30'		CONTRACT NO.		<b>HARDY</b> PROCESS SOLUTIONS			
		APPROVALS					
		DRAWN V. CHULA	DATE 10-08-14			TITLE <b>OUTLINE DRAWING, LOAD CELL, HI SPL SERIES</b>	
		CHECKED N. SCHERRER	DATE 10-09-14				
APPROVED E. JAMES	DATE 10-09-14						
MATERIAL	ISSUED V. CHULA	DATE 10-09-14	SIZE D	FSCM 21316	DRAWING NO. 0588-0164		
FINISH	PRODUCTION	DATE	REV. A				
DO NOT SCALE DRAWING			FILE NAME: 588164A1.DWG	SCALE: NONE	SHEET 1 OF 2		





DROP-IN CAD FILE VIEWS



<b>HARDY</b> PROCESS SOLUTIONS			
TITLE OUTLINE DRAWING, LOAD CELL, HI SPL SERIES			
SIZE	FSCM	DRAWING NO.	REV.
D	21316	0588-0164	A
FILE NAME: 588164A1.DWG		SCALE: NONE	SHEET 2 OF 2