

REV.	ECO/DDC	DESCRIPTION	DATE	DRAFT	CHECK	APV'D
A	----	RELEASED.	10-17-14	V.J.C.	N.H.S.	E.J.
B	12088	REVISED PER ECN.	11-18-19	V.J.C.	L.E.G.	V.J.C.

6. SEE SHEETS 2 AND 3 FOR ADDITIONAL INFORMATION.

5 CABLE LENGTH ORIGINATES AT THE CABLE EXIT POINT ON THE LOAD SENSOR.

4 WIRE COLOR CODE FLAG LABEL, SUPPLIED WITH LOAD SENSOR, IS LOCATED APPROXIMATELY 10 INCHES FROM END OF CABLE.

EXCITATION +	RED
EXCITATION -	BLACK
SIGNAL +	GREEN
SIGNAL -	WHITE
C2 +	GRAY
C2 -	VIOLET
SHIELD	YELLOW OR BARE

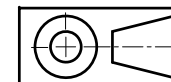
3 SCALE CABLE WIRE ENDS ARE STRIPPED BACK 0.5 INCHES AND TINNED.  
SCALE CABLE JACKET IS STRIPPED BACK APPROXIMATELY 5 INCHES.

2. THIS DRAWING IS SUBJECT TO CHANGE WITHOUT NOTICE.

1. RATED OUTPUT: 2.000 ±0.002mV/V.

**NOTES: UNLESS OTHERWISE SPECIFIED**

**PROPRIETARY NOTICE**  
ALL DATA AND INFORMATION CONTAINED IN OR DISCLOSED BY THIS DOCUMENT IS CONFIDENTIAL AND PROPRIETARY INFORMATION OF HARDY PROCESS SOLUTIONS INC. AND ALL RIGHTS THEREIN ARE EXPRESSLY RESERVED. BY ACCEPTING THIS MATERIAL THE RECIPIENT AGREES THAT THIS MATERIAL AND THE INFORMATION CONTAINED THEREIN IS HELD IN CONFIDENCE AND IN TRUST AND SHALL NOT BE USED, COPIED, REPRODUCED IN WHOLE OR IN PART, NOR ITS CONTENTS REVEALED IN ANY MANNER TO OTHERS, EXCEPT TO MEET THE SPECIFIC PURPOSE FOR WHICH IT WAS DELIVERED.



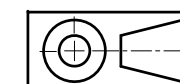
ITEM	QTY	PART NUMBER	DESCRIPTION	COMMENTS
0588-0155 OUTLINE DRAWING, BS400 SERIES BENCH SCALES				
UNLESS OTHERWISE SPECIFIED DIMENSIONS ARE IN INCHES TOLERANCES ARE: FRACTIONS: N/A DECIMALS: .XX = ±.03 .XXX = ±.010 ANGLES: ±0°, 30'				
CONTRACT NO.				
APPROVALS				
DRAWN V. CHULA		DATE 10-15-14		
CHECKED N. SCHERRER		DATE 10-16-14		
APPROVED E. JAMES		DATE 10-17-14		
MATERIAL		ISSUED V. CHULA		
FINISH		DATE 10-17-14		
DO NOT SCALE DRAWING		PRODUCTION DATE		
<b>HARDY</b> PROCESS SOLUTIONS				
TITLE <b>OUTLINE DRAWING, BS400 SERIES BENCH SCALES</b>				
SIZE	FSCM	DRAWING NO.	REV.	
D	21316	0588-0155	B	
FILE NAME: 588155B1.DWG		SCALE: NONE		SHEET 1 OF 3

**MODEL NUMBER CONFIGURATION CHART**

MODEL NUMBER	CAPACITY	SCALE MATERIAL	DIMENSION A	DIMENSION B	DIMENSION C	DIMENSION D	DIMENSION E (ADJUSTABLE)	DIMENSION F	DIMENSION G	LOAD SENSOR MODEL NUMBER	CABLE LENGTH
HIBS400-1212-5LB	5 LBS	STAINLESS STEEL	12.53 IN	12.53 IN	12 IN NOMINAL	12 IN NOMINAL	4.00 IN - 4.75 IN	9.88 IN	9.88 IN	HISP6-10	10 FT [3M]
HIBS400-1212-25LB	25 LBS	STAINLESS STEEL	12.53 IN	12.53 IN	12 IN NOMINAL	12 IN NOMINAL	4.00 IN - 4.75 IN	9.88 IN	9.88 IN	HISP6-20	10 FT [3M]
HIBS400-1212-50LB	50 LBS	STAINLESS STEEL	12.53 IN	12.53 IN	12 IN NOMINAL	12 IN NOMINAL	4.00 IN - 4.75 IN	9.88 IN	9.88 IN	HISP6-50	10 FT [3M]
HIBS400-1212-150LB	150 LBS	STAINLESS STEEL	12.53 IN	12.53 IN	12 IN NOMINAL	12 IN NOMINAL	4.00 IN - 4.75 IN	9.88 IN	9.88 IN	HISP6-100	10 FT [3M]
HIBS400-1818-50LB	50 LBS	STAINLESS STEEL	18.53 IN	18.53 IN	18 IN NOMINAL	18 IN NOMINAL	4.00 IN - 4.75 IN	15.88 IN	15.88 IN	HISP6-50	10 FT [3M]
HIBS400-1818-150LB	150 LBS	STAINLESS STEEL	18.53 IN	18.53 IN	18 IN NOMINAL	18 IN NOMINAL	4.00 IN - 4.75 IN	15.88 IN	15.88 IN	HISP6-100	10 FT [3M]
HIBS400-1818-300LB	300 LBS	STAINLESS STEEL	18.53 IN	18.53 IN	18 IN NOMINAL	18 IN NOMINAL	4.00 IN - 4.75 IN	15.88 IN	15.88 IN	HISP6-200	10 FT [3M]
HIBS400-1818-500LB	500 LBS	STAINLESS STEEL	18.53 IN	18.53 IN	18 IN NOMINAL	18 IN NOMINAL	5.50 IN - 6.50 IN	16.50 IN	16.50 IN	HISPB1-250	10 FT [3M]
HIBS400-2424-50LB	50 LBS	STAINLESS STEEL	24.53 IN	24.53 IN	24 IN NOMINAL	24 IN NOMINAL	5.50 IN - 6.50 IN	20.38 IN	20.38 IN	HISPB1-50	10 FT [3M]
HIBS400-2424-150LB	150 LBS	STAINLESS STEEL	24.53 IN	24.53 IN	24 IN NOMINAL	24 IN NOMINAL	5.50 IN - 6.50 IN	20.38 IN	20.38 IN	HISPB1-100	10 FT [3M]
HIBS400-2424-300LB	300 LBS	STAINLESS STEEL	24.53 IN	24.53 IN	24 IN NOMINAL	24 IN NOMINAL	5.50 IN - 6.50 IN	20.38 IN	20.38 IN	HISPB1-250	10 FT [3M]
HIBS400-2424-500LB	500 LBS	STAINLESS STEEL	24.53 IN	24.53 IN	24 IN NOMINAL	24 IN NOMINAL	5.50 IN - 6.50 IN	20.38 IN	20.38 IN	HISPB1-250	10 FT [3M]
HIBS400-2424-1000LB	1000 LBS	STAINLESS STEEL	24.53 IN	24.53 IN	24 IN NOMINAL	24 IN NOMINAL	5.50 IN - 6.50 IN	20.38 IN	20.38 IN	HISPB1-500	10 FT [3M]

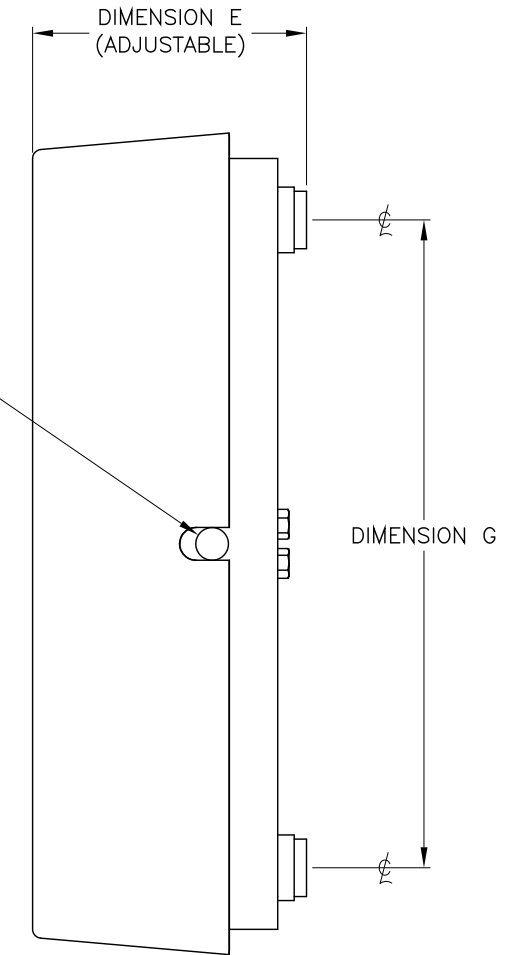
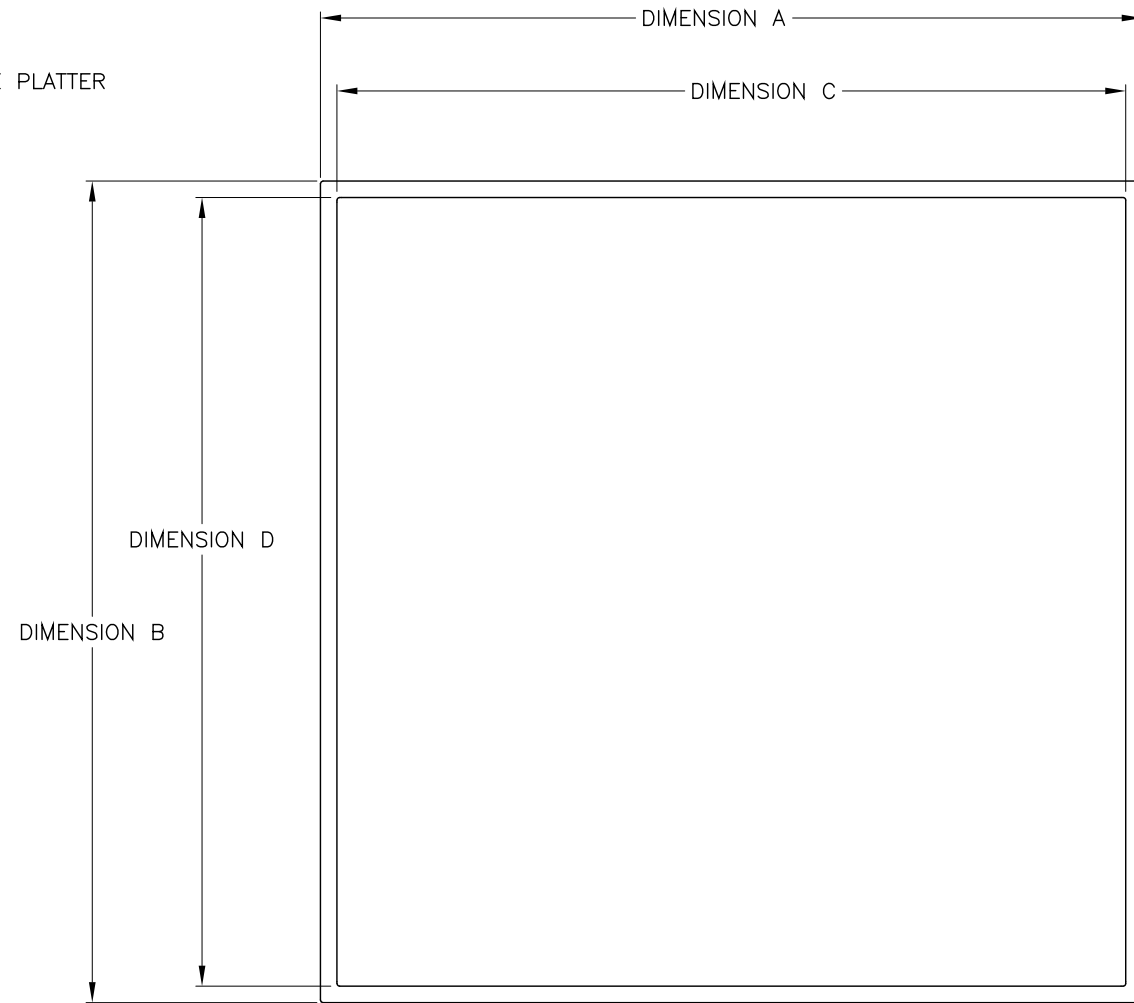
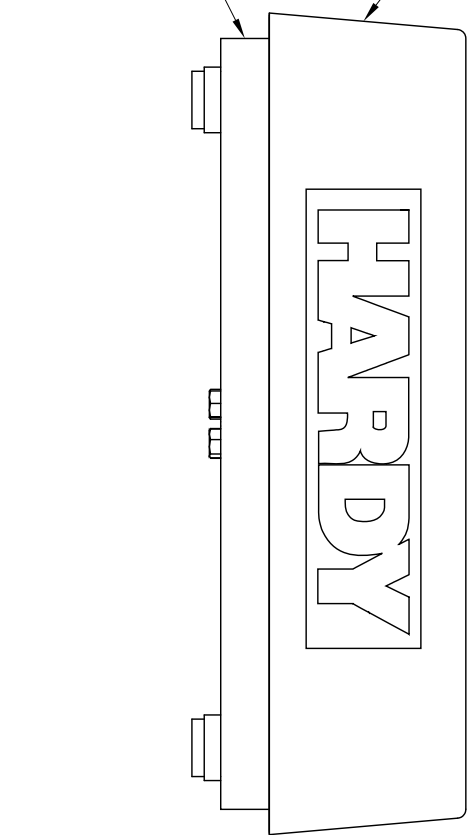
5

Maximum capacity ( $E_{max}$ )	Pounds	5, 25, 50, 150, 300, 500, 1000
Rated Output (R.O.) at Rated Capacity	mV/V	2.000 ±5%
C2 Error	%R.O. lb	<0.02
Combined error	%R.O.	0.020
Creep error (30 minutes)	%R.O.	0.020
Temperature effect on minimum dead load output	%R.O./°C	≤ ±0.0166
Temperature effect on sensitivity	%/°C	≤ ±0.0166
Excitation Voltage ( $V_{max}$ )	V	5-15
Zero balance	%R.O.	≤ ±5
Input resistance	Ω	1100 ±50
Output resistance	Ω	960 ±50
Insulation resistance (@ 100VDC)	MΩ	≥ 5000
Compensated temperature range	°C	-10 to +40
Operating temperature range	°C	-40 to +80
Overload	% $E_{max}$	300
End loading	% $E_{max}$	100
Corner loading	% $E_{max}$	100



<b>HARDY</b> PROCESS SOLUTIONS			
TITLE OUTLINE DRAWING, BS400 SERIES BENCH SCALES			
SIZE	FSCM	DRAWING NO.	REV.
D	21316	0588-0155	B
FILE NAME: 588155B1.DWG		SCALE: NONE	SHEET 2 OF 3

SCALE BASE  
SCALE PLATTER



SCALE CABLE EXIT

CABLE LENGTH  $\pm 2.00$  IN  
MEASURED AT EXIT  
POINT ON LOAD SENSOR

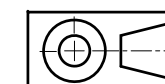
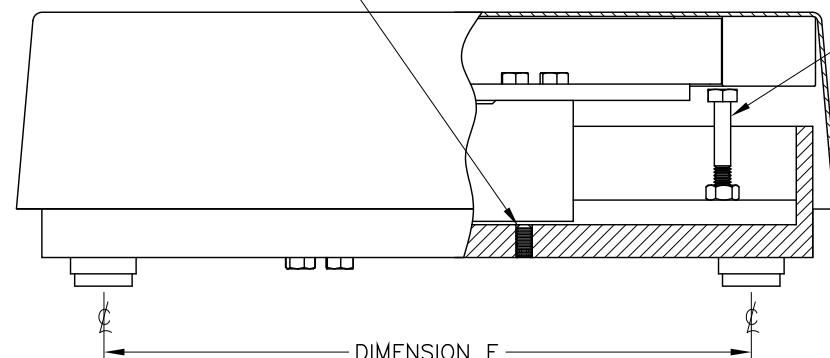
5

4

3

LOAD CELL OVERLOAD STOP SCREW  
ADJUST PER APPLICATION  
(NOT APPLICABLE ON  
500LB & 1000LB SCALES)

CORNER OVERLOAD STOP SCREW  
ADJUST PER APPLICATION  
4 PL



<b>HARDY</b> PROCESS SOLUTIONS			
TITLE OUTLINE DRAWING, BS400 SERIES BENCH SCALES			
SIZE	FSCM	DRAWING NO.	REV.
D	21316	0588-0155	B
FILE NAME: 588155B1.DWG		SCALE: NONE	SHEET 3 OF 3