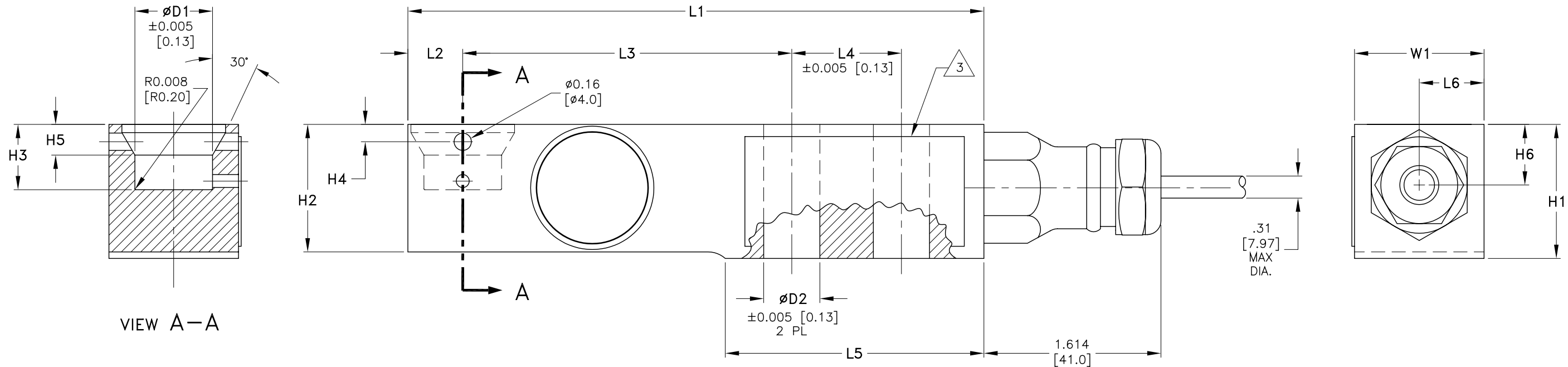


DIMENSIONS— INCHES & [mm]

TOLERANCES: ±0.010 [0.25] UNLESS OTHERWISE STATED

REV.	ECO/DDC	DESCRIPTION	DATE	DRAFT	CHECK	APV'D
A	---	RELEASED.	01-07-05	V.J.C.	S.N.	V.J.C.

CAPACITY	L1	L2	L3	L4	L5	L6	H1	H2	H3	H4	H5	H6	W1	∅D1	∅D2	BOLT 	TORQUE
500LB/1KLB	5.25 [133.4]	0.50 [12.7]	3.00 [76.2]	1.00 [25.4]	2.36 [59.9]	0.59 [15.0]	1.22 [31.0]	1.02 [28.8]	0.59 [15.0]	0.16 [4.0]	0.28 [7.1]	0.58 [14.7]	1.181±0.003 [30.0±.08]	0.709 [18.0]	0.51 [13.0]	.500-20 UNC GRADE 5 [M12 8.8]	66 FT LBS [90Nm]
2.5KLB	5.25 [133.4]	0.50 [12.7]	3.00 [76.2]	1.00 [25.4]	2.36 [59.9]	0.59 [15.0]	1.22 [31.0]	1.20 [30.5]	0.59 [15.0]	0.16 [4.0]	0.28 [7.1]	0.58 [14.7]	1.181±0.003 [30.0±.08]	0.709 [18.0]	0.51 [13.0]	.500-20 UNC GRADE 5 [M12 8.8]	66 FT LBS [90Nm]
5KLB	5.25 [133.4]	0.50 [12.7]	3.00 [76.2]	1.00 [25.4]	2.36 [59.9]	0.59 [15.0]	1.22 [31.0]	1.20 [30.5]	0.59 [15.0]	0.16 [4.0]	0.28 [7.1]	0.58 [14.7]	1.181±0.003 [30.0±.08]	0.709 [18.0]	0.51 [13.0]	.500-20 UNC GRADE 8 [M12 10.9]	88 FT LBS [120Nm]




- 8 USE 2 EACH TO MOUNT LOAD SENSOR.
- 7. THIS DRAWING IS SUBJECT TO CHANGE WITHOUT NOTICE.
- 6. CABLE IS 6 CONDUCTOR, SHIELDED AND 10 FT [3M] IN LENGTH. CABLE SHIELD IS FLOATING.
- 5. C2 WIRE COLOR CODE FLAG LABEL, PN 0530-0594, LOCATED APPROX. 10 IN. FROM END OF CABLE.
 - EXCITATION + RED
 - EXCITATION - BLACK
 - SIGNAL + GREEN
 - SIGNAL - WHITE
 - C2 + GRAY
 - C2 - VIOLET
 - SHIELD YELLOW
- 4. CABLE WIRE ENDS ARE STRIPPED BACK 0.5 IN. AND TINNED. CABLE JACKET IS STRIPPED BACK APPROX. 5 IN.
- 3 LOCATION OF MODEL/SERIAL NUMBER LABEL.
- 2. MATERIAL: SENSOR- STAINLESS STEEL 17.4PH (1.4548). FITTINGS- STAINLESS STEEL 316.
- 1. RATED OUTPUT: 2mV/V ±0.002.

CAPACITY	MODEL NUMBER	PART NUMBER
500LB	HI SBHF14-500	0554-0028-01
1KLB	HI SBHF14-1K	0554-0028-02
2.5KLB	HI SBHF14-2.5K	0554-0028-03
5KLB	HI SBHF14-5K	0554-0028-04

NOTES: UNLESS OTHERWISE SPECIFIED

PROPRIETARY NOTICE
 ALL DATA AND INFORMATION CONTAINED IN OR DISCLOSED BY THIS DOCUMENT IS CONFIDENTIAL AND PROPRIETARY INFORMATION OF HARDY INSTRUMENTS INC. AND ALL RIGHTS THEREIN ARE EXPRESSLY RESERVED. BY ACCEPTING THIS MATERIAL THE RECIPIENT AGREES THAT THIS MATERIAL AND THE INFORMATION CONTAINED THEREIN IS HELD IN CONFIDENCE AND IN TRUST AND SHALL NOT BE USED, COPIED, REPRODUCED IN WHOLE OR IN PART, NOR ITS CONTENTS REVEALED IN ANY MANNER TO OTHERS, EXCEPT TO MEET THE SPECIFIC PURPOSE FOR WHICH IT WAS DELIVERED.

		0588-0109	OUTLINE DRAWING, LOAD SENSOR, HI SBHF14F SERIES		
ITEM	QTY	PART NUMBER	DESCRIPTION	COMMENTS	
PARTS LIST					
UNLESS OTHERWISE SPECIFIED DIMENSIONS ARE IN INCHES [MM] TOLERANCES ARE: DECIMALS: .XX AND .XXX = ±.010 ANGLES: N/A		CONTRACT NO.		 OUTLINE DRAWING, LOAD SENSOR, HI SBHF14 SERIES	
		APPROVALS			
		DRAWN V. CHULA	DATE 01-07-05		
		CHECKED S. NAVARRO	DATE 01-07-05		
MATERIAL		APPROVED V. CHULA	DATE 01-07-05	TITLE	
FINISH		ISSUED V. CHULA	DATE 01-07-05	SIZE D	FSCM 21316
DO NOT SCALE DRAWING		PRODUCTION	DATE	DRAWING NO. 0588-0109	REV. A
		FILE NAME: 588109A1.DWG	SCALE: NONE	SHEET 1 OF 1	