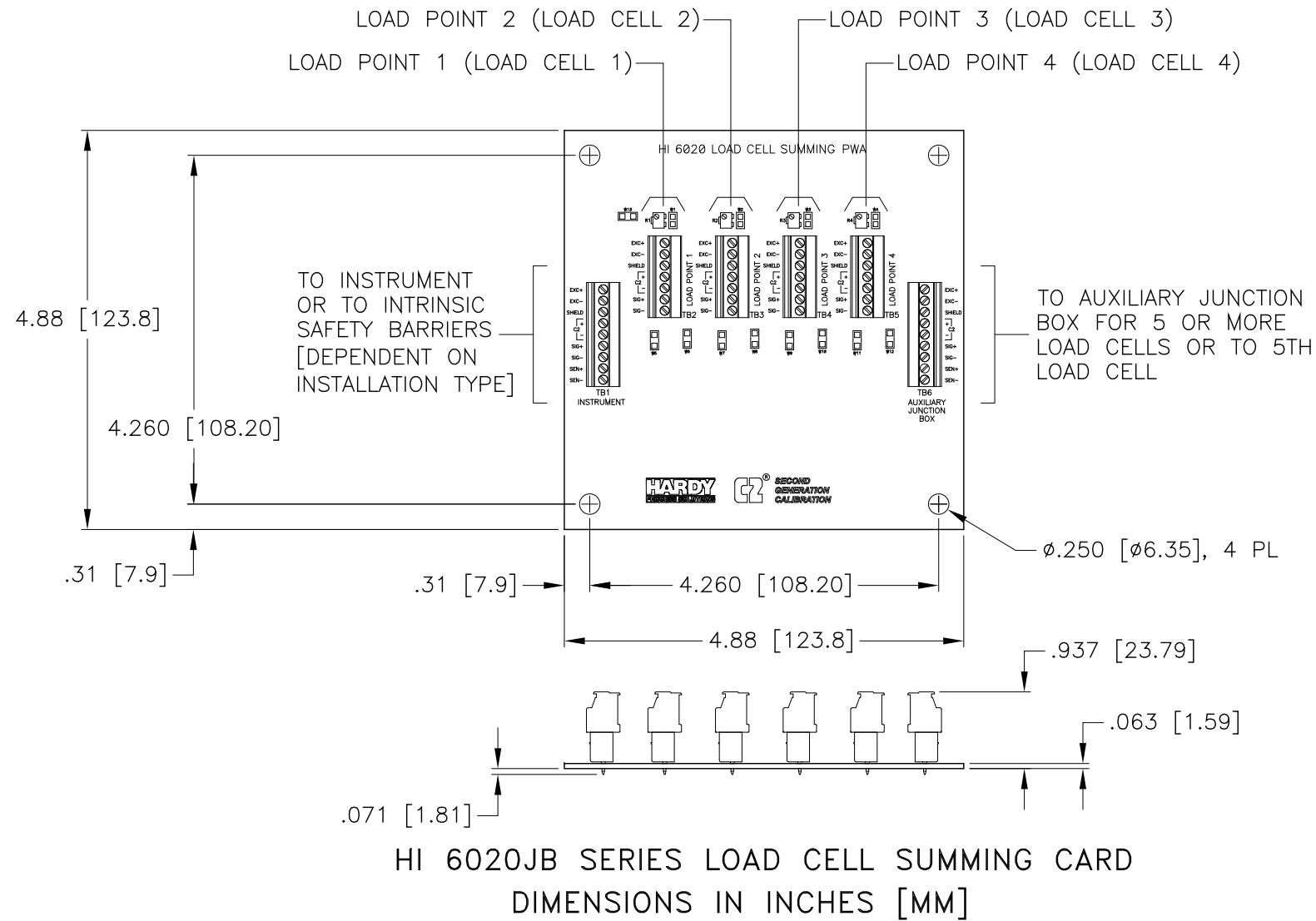


REV.	ECO/DDC	DESCRIPTION	DATE	DRAFT	CHECK	APV'D
A	----	RELEASED.	03-16-17	V.J.C.	E.M.J.	V.J.C.

JUNCTION BOX FIELD WIRING TERMINAL BLOCKS



7 OPTIONAL TRIM POTS CANNOT BE USED WITH C2 LOAD SENSORS.

6. SEE SHEET 2 FOR ENCLOSURE MOUNTING DIMENSIONS.

5. REFER TO GENERAL CONTROL DRAWING 0594-0007 FOR HAZARDOUS AREA USAGE GUIDELINES AND SYSTEM INTERCONNECT INFORMATION.

4 INSERT C2 LOAD CELL CABLE THROUGH GRIP FITTING AND TIGHTEN ON CABLE AREA MARKED GRIP ZONE. ALIGN END OF GRIP FITTING TO COMPLETELY COVER CABLE GRIP ZONE.

3 THE FOLLOWING PARTS ARE PLACED IN A BAG AND SHIPPED INSIDE THE JUNCTION BOX.

ITEM	PART NUMBER	QTY	DESCRIPTION
1	2814-0095-0	6	1/2 NPT NYLON LOCK NUT
2	6007-0097-0	6	1/2 NPT UL TYPE 4X NYLON CORD GRIP, ϕ .17 [ϕ 4.3] - ϕ .45 [ϕ 11.4]
3	2454-0009	6	1/2 NPT LIQUID TIGHT HOLE PLUG

2. USE HARDY PROCESS SOLUTIONS CERTIFIED LOAD CELL CABLE MODEL NO. C2 CABLE [PN 6020-0001-0].

1. REFER TO LOAD CELL CAL SHEET OR WEIGHING ASSEMBLY SELECTION GUIDE FOR LOAD CELL WIRING COLOR CODE.

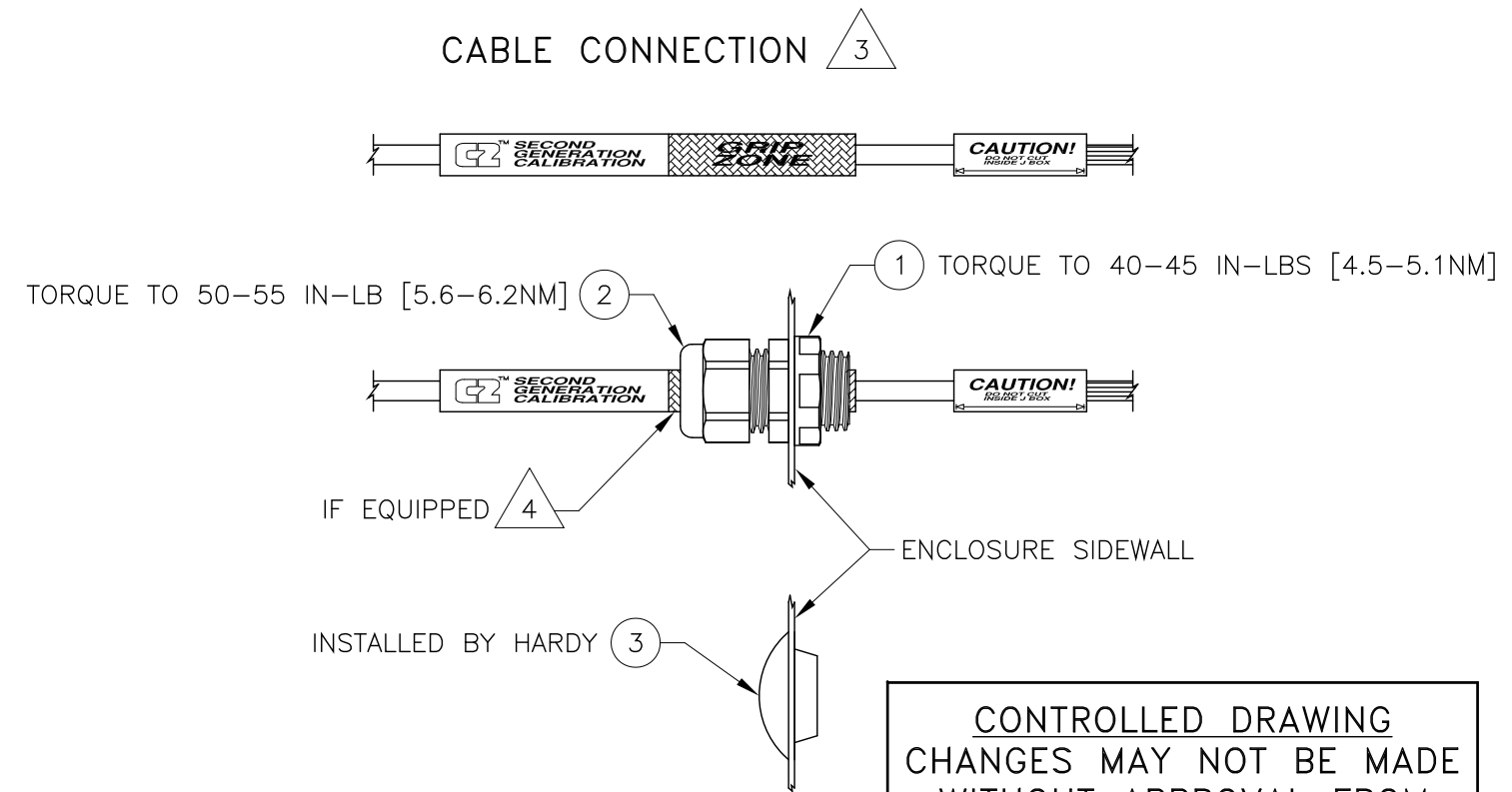
NOTES: UNLESS OTHERWISE SPECIFIED

PROPRIETARY NOTICE
ALL DATA AND INFORMATION CONTAINED IN OR DISCLOSED BY THIS DOCUMENT IS CONFIDENTIAL AND PROPRIETARY INFORMATION OF HARDY PROCESS SOLUTIONS INC. AND ALL RIGHTS THEREIN ARE EXPRESSLY RESERVED. BY ACCEPTING THIS MATERIAL THE RECIPIENT AGREES THAT THIS MATERIAL AND THE INFORMATION CONTAINED THEREIN IS HELD IN CONFIDENCE AND IN TRUST AND SHALL NOT BE USED, COPIED, REPRODUCED IN WHOLE OR IN PART, NOR ITS CONTENTS REVEALED IN ANY MANNER TO OTHERS, EXCEPT TO MEET THE SPECIFIC PURPOSE FOR WHICH IT WAS DELIVERED.

MODEL NUMBERS 7

HI 6020JB-SS1-6	DESCRIPTION
BLANK	= WITHOUT EXPANSION PORT
6	= WITH EXPANSION PORT
1	= WITHOUT TRIM POTS
2	= WITH TRIM POTS
SS	= STAINLESS STEEL ENCLOSURE

CABLE CONNECTION 3



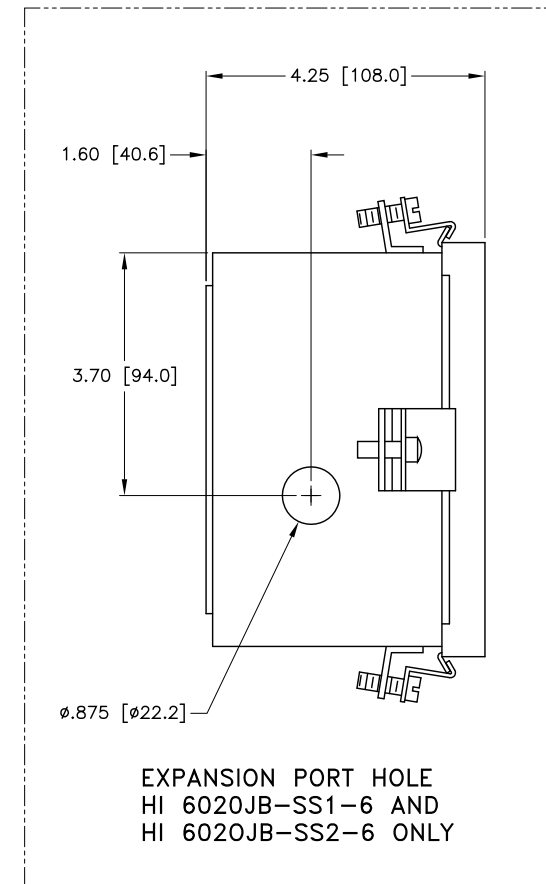
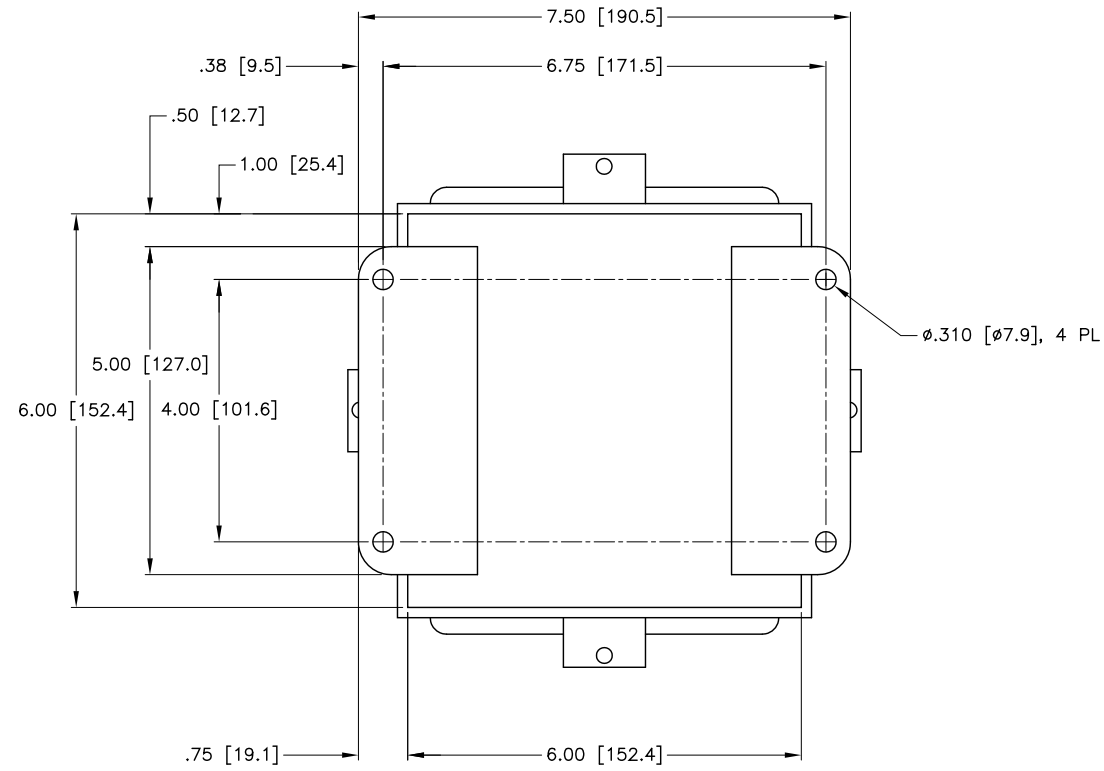
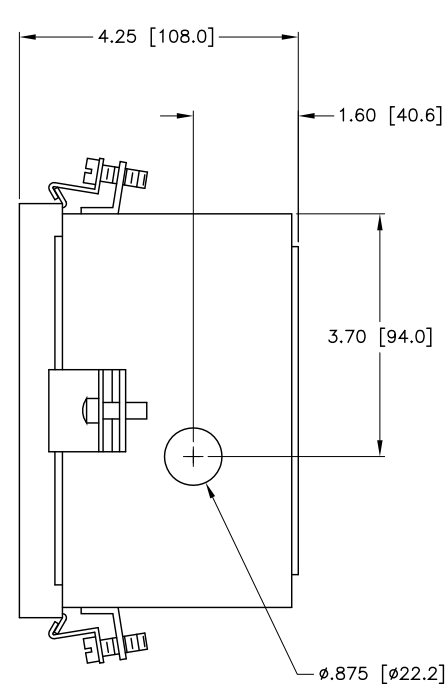
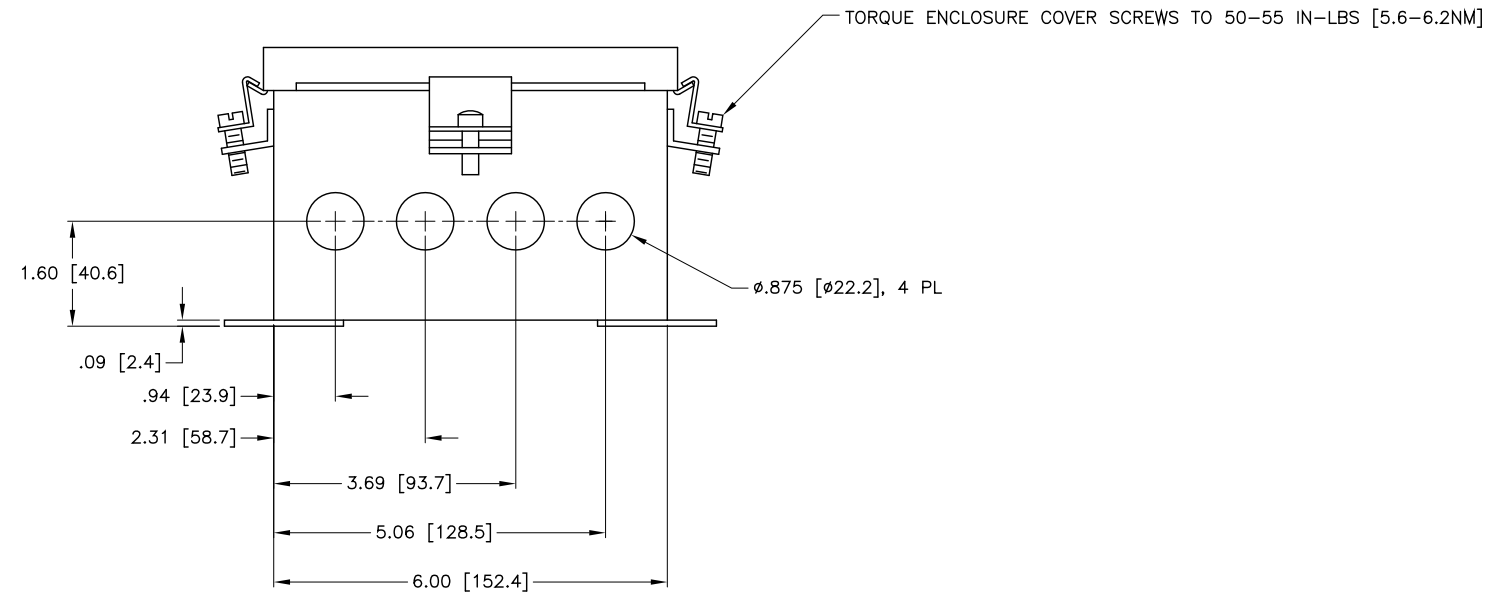
CONTROLLED DRAWING
CHANGES MAY NOT BE MADE
WITHOUT APPROVAL FROM
CERTIFICATION AGENCY

ITEM	QTY	PART NUMBER	DESCRIPTION	COMMENTS
		0584-0100	I/I DIAGRAM, HI 6020JB-SS SERIES	
PARTS LIST				
UNLESS OTHERWISE SPECIFIED DIMENSIONS IN INCHES [MM] TOLERANCES: FRACTIONS: N/A DECIMALS: .XX = \pm .03 [.8] .XXX = \pm .010 [.25] ANGLES: \pm 0°, 30°		CONTRACT NO.		
MATERIAL		APPROVALS		
FINISH		DRAWN V. CHULA DATE 02-24-17		
DO NOT SCALE DRAWING		CHECKED E. JAMES DATE 03-16-17		
		APPROVED V. CHULA DATE 03-16-17		
		ISSUED V. CHULA DATE 03-16-17		
		PRODUCTION DATE		
		SIZE D	FSCM 21316	DRAWING NO. 0584-0100
		REV. A		FILE NAME: 584100A1.DWG
		SCALE: NONE		SHEET 1 OF 2

HARDY
PROCESS SOLUTIONS

I/I DIAGRAM,
HI 6020JB-SS SERIES

HI 6020JB-SS1 SERIES
 HI 6020JB-SS2 SERIES
 (STAINLESS STEEL ENCLOSURE)



DIMENSIONS IN INCHES [MM]



TITLE			
I/I DIAGRAM, HI 6020JB-SS SERIES			
SIZE	FSCM	DRAWING NO.	REV.
D	21316	0584-0100	A
FILE NAME: 584100A1.DWG		SCALE: NONE	SHEET 2 OF 2