

REV.	ECO/DDC	DESCRIPTION	DATE	DRAFT	CHECK	APV'D
A	----	RELEASED.	10-17-14	V.J.C.	N.H.S.	E.J.
B	12088	REVISED PER ECN.	11-18-19	V.J.C.	L.E.G.	V.J.C.

6. SEE SHEETS 2 AND 3 FOR ADDITIONAL INFORMATION.

5 CABLE LENGTH ORIGINATES AT THE CABLE EXIT POINT ON THE LOAD SENSOR.

4 LOAD CELL WIRE COLOR CODE:

EXCITATION +	GREEN
EXCITATION -	BLACK
SENSE +	BLUE
SENSE -	BROWN
SIGNAL +	RED
SIGNAL -	WHITE
SHIELD	BARE

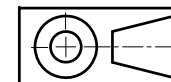
3 SCALE CABLE WIRE ENDS ARE STRIPPED BACK APPROXIMATELY 0.5 INCHES AND TINNED.
SCALE CABLE JACKET IS STRIPPED BACK APPROXIMATELY 2-3 INCHES.


2. THIS DRAWING IS SUBJECT TO CHANGE WITHOUT NOTICE.

1. RATED OUTPUT: 2.000 ±0.2mV/V.

NOTES: UNLESS OTHERWISE SPECIFIED

PROPRIETARY NOTICE
ALL DATA AND INFORMATION CONTAINED IN OR DISCLOSED BY THIS DOCUMENT IS CONFIDENTIAL AND PROPRIETARY INFORMATION OF HARDY PROCESS SOLUTIONS INC. AND ALL RIGHTS THEREIN ARE EXPRESSLY RESERVED. BY ACCEPTING THIS MATERIAL THE RECIPIENT AGREES THAT THIS MATERIAL AND THE INFORMATION CONTAINED THEREIN IS HELD IN CONFIDENCE AND IN TRUST AND SHALL NOT BE USED, COPIED, REPRODUCED IN WHOLE OR IN PART, NOR ITS CONTENTS REVEALED IN ANY MANNER TO OTHERS, EXCEPT TO MEET THE SPECIFIC PURPOSE FOR WHICH IT WAS DELIVERED.



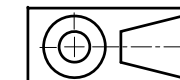
ITEM	QTY	PART NUMBER	DESCRIPTION	COMMENTS
		0588-0157	OUTLINE DRAWING, BS200 SERIES BENCH SCALES	
PARTS LIST				
UNLESS OTHERWISE SPECIFIED DIMENSIONS ARE IN INCHES TOLERANCES ARE: FRACTIONS: N/A DECIMALS: .XX = ±.03 .XXX = ±.010 ANGLES: ±0°, 30'		CONTRACT NO.		 OUTLINE DRAWING, BS200 SERIES BENCH SCALES
MATERIAL		APPROVALS		
		DRAWN V. CHULA	DATE 10-15-14	
FINISH		CHECKED N. SCHERRER	DATE 10-16-14	
		APPROVED E. JAMES	DATE 10-17-14	
DO NOT SCALE DRAWING		ISSUED V. CHULA	DATE 10-17-14	
		PRODUCTION	DATE	FSCM 21316
		DRAWING NO. 0588-0157		REV. B
		FILE NAME: 588157B1.DWG		SCALE: NONE
				SHEET 1 OF 3

MODEL NUMBER CONFIGURATION CHART

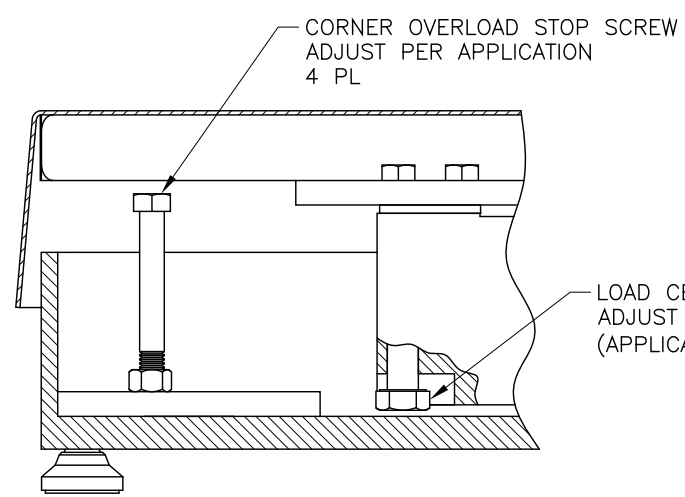
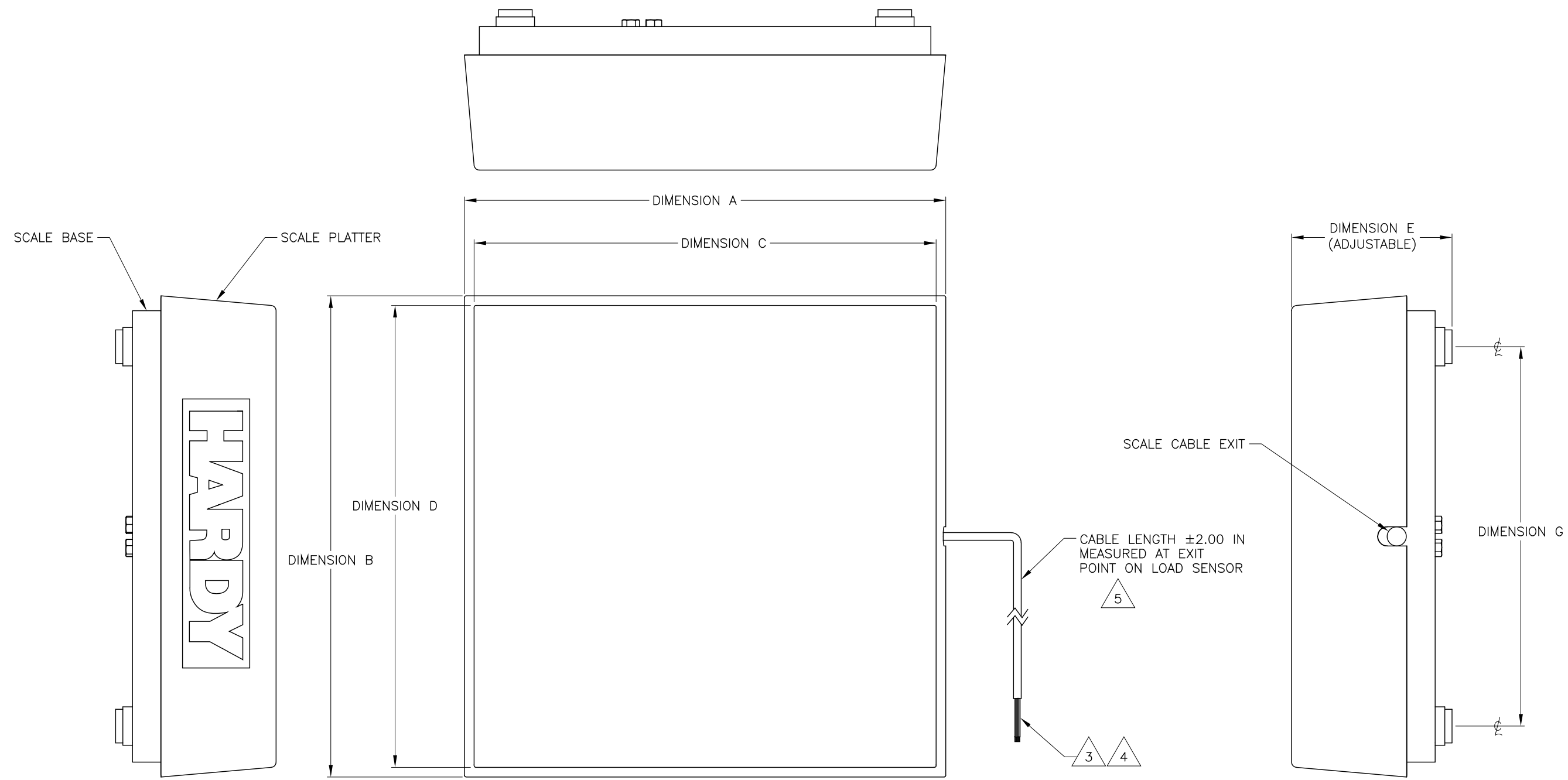
MODEL NUMBER	CAPACITY	SCALE MATERIAL	DIMENSION A	DIMENSION B	DIMENSION C	DIMENSION D	DIMENSION E (ADJUSTABLE)	DIMENSION F	DIMENSION G	CABLE LENGTH
HIBS200-1212-5LB	5 LBS	STAINLESS STEEL PLATTER, PAINTED STEEL BASE	12.53 IN	12.53 IN	12 IN NOMINAL	12 IN NOMINAL	4.00 IN - 4.75 IN	9.88 IN	9.88 IN	10 FT [3M]
HIBS200-1212-25LB	25 LBS	STAINLESS STEEL PLATTER, PAINTED STEEL BASE	12.53 IN	12.53 IN	12 IN NOMINAL	12 IN NOMINAL	4.00 IN - 4.75 IN	9.88 IN	9.88 IN	10 FT [3M]
HIBS200-1212-50LB	50 LBS	STAINLESS STEEL PLATTER, PAINTED STEEL BASE	12.53 IN	12.53 IN	12 IN NOMINAL	12 IN NOMINAL	4.00 IN - 4.75 IN	9.88 IN	9.88 IN	10 FT [3M]
HIBS200-1212-150LB	150 LBS	STAINLESS STEEL PLATTER, PAINTED STEEL BASE	12.53 IN	12.53 IN	12 IN NOMINAL	12 IN NOMINAL	4.00 IN - 4.75 IN	9.88 IN	9.88 IN	10 FT [3M]
HIBS200-1818-50LB	50 LBS	STAINLESS STEEL PLATTER, PAINTED STEEL BASE	18.53 IN	18.53 IN	18 IN NOMINAL	18 IN NOMINAL	4.00 IN - 4.75 IN	15.88 IN	15.88 IN	10 FT [3M]
HIBS200-1818-150LB	150 LBS	STAINLESS STEEL PLATTER, PAINTED STEEL BASE	18.53 IN	18.53 IN	18 IN NOMINAL	18 IN NOMINAL	4.00 IN - 4.75 IN	15.88 IN	15.88 IN	10 FT [3M]
HIBS200-1818-300LB	300 LBS	STAINLESS STEEL PLATTER, PAINTED STEEL BASE	18.53 IN	18.53 IN	18 IN NOMINAL	18 IN NOMINAL	4.00 IN - 4.75 IN	15.88 IN	15.88 IN	10 FT [3M]
HIBS200-1818-500LB	500 LBS	STAINLESS STEEL PLATTER, PAINTED STEEL BASE	18.53 IN	18.53 IN	18 IN NOMINAL	18 IN NOMINAL	5.50 IN - 6.50 IN	16.50 IN	16.50 IN	10 FT [3M]
HIBS200-2424-50LB	50 LBS	STAINLESS STEEL PLATTER, PAINTED STEEL BASE	24.53 IN	24.53 IN	24 IN NOMINAL	24 IN NOMINAL	5.50 IN - 6.50 IN	20.38 IN	20.38 IN	10 FT [3M]
HIBS200-2424-150LB	150 LBS	STAINLESS STEEL PLATTER, PAINTED STEEL BASE	24.53 IN	24.53 IN	24 IN NOMINAL	24 IN NOMINAL	5.50 IN - 6.50 IN	20.38 IN	20.38 IN	10 FT [3M]
HIBS200-2424-300LB	300 LBS	STAINLESS STEEL PLATTER, PAINTED STEEL BASE	24.53 IN	24.53 IN	24 IN NOMINAL	24 IN NOMINAL	5.50 IN - 6.50 IN	20.38 IN	20.38 IN	10 FT [3M]
HIBS200-2424-500LB	500 LBS	STAINLESS STEEL PLATTER, PAINTED STEEL BASE	24.53 IN	24.53 IN	24 IN NOMINAL	24 IN NOMINAL	5.50 IN - 6.50 IN	20.38 IN	20.38 IN	10 FT [3M]
HIBS200-2424-1000LB	1000 LBS	STAINLESS STEEL PLATTER, PAINTED STEEL BASE	24.53 IN	24.53 IN	24 IN NOMINAL	24 IN NOMINAL	5.50 IN - 6.50 IN	20.38 IN	20.38 IN	10 FT [3M]

5

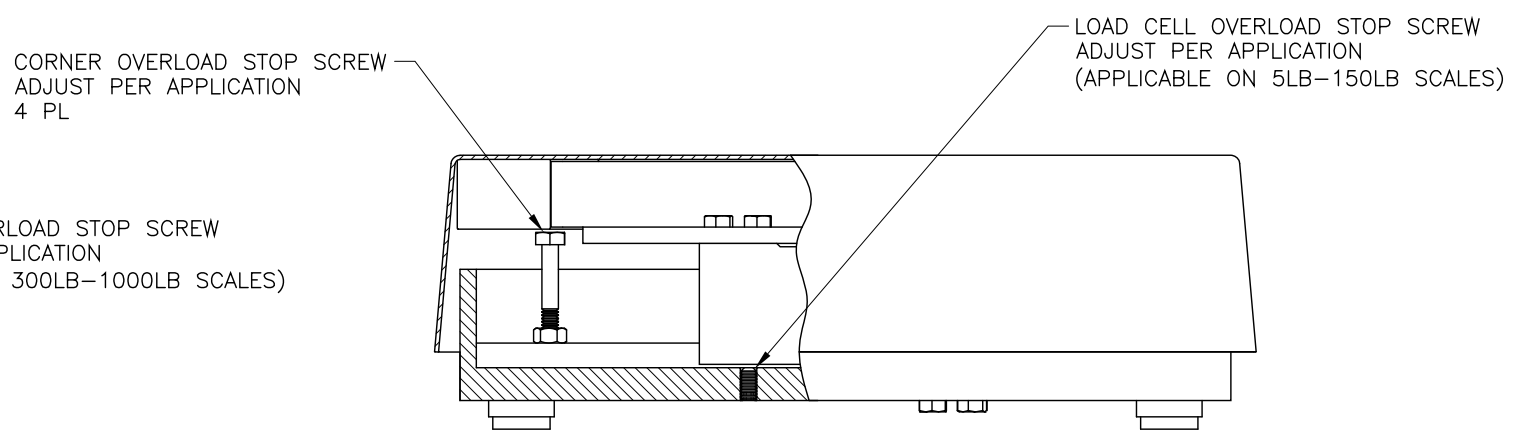
Maximum capacity (E_{max})	Pounds	5, 25, 50, 150, 300, 500, 1000
Rated Output (R.O.) at Rated Capacity	mV/V	2.000
Rated Output tolerance	mV/V	±0.200
Zero balance	mV/V	0.200
Zero return (30 minutes)	%R.O.	5-150LB: 0.025; 300-1000LB: 0.033
Total error	%R.O.	0.020
Temperature effect on zero	%R.O./°C	≤ ±0.0023
Temperature effect on output	%R.O./°C	≤ ±0.0010
Eccentric loading error	%R.O./cm	5-150LB: ≤ ±0.0033; 300-1000LB: ≤ ±0.0049
Excitation Voltage (V_{max})	V	5-15
Input resistance	Ω	415 ±20
Output resistance	Ω	350 ±3
Insulation resistance (@ 100VDC)	MΩ	≥ 2000
Compensated temperature range	°C	-10 to +40
Operating temperature range	°C	-20 to +70
Overload	% E_{max}	300
End loading	% E_{max}	100
Corner loading	% E_{max}	100



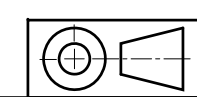
HARDY PROCESS SOLUTIONS			
TITLE OUTLINE DRAWING, BS200 SERIES BENCH SCALES			
SIZE	FSCM	DRAWING NO.	REV.
D	21316	0588-0157	B
FILE NAME: 588157B1.DWG		SCALE: NONE	SHEET 2 OF 3



300LB-1000LB SCALES



DIMENSION F



HARDY PROCESS SOLUTIONS			
TITLE OUTLINE DRAWING, BS200 SERIES BENCH SCALES			
SIZE	FSCM	DRAWING NO.	REV.
D	21316	0588-0157	B
FILE NAME: 588157B1.DWG		SCALE: NONE	SHEET 3 OF 3