

DIMENSIONS— INCHES & [mm]

MODEL NUMBER	CAPACITY LBS [KG]	CABLE LENGTH FT [M]	H	H2	L	L2	W	W2	THD	WEIGHT
HI STLB-220LB	220 LB [100KG]	20FT [6M]	3.00 [76.2]	1.50 [38.1]	1.93 [49.0]	.96 [24.5]	1.18 [30.0]	.59 [15.0]	.500-20 UNF-2B	2.20 LB [1.0KG]
HI STLB-440LB	440 LB [200KG]	20FT [6M]	3.00 [76.2]	1.50 [38.1]	1.93 [49.0]	.96 [24.5]	1.18 [30.0]	.59 [15.0]	.500-20 UNF-2B	2.20 LB [1.0KG]
HI STLB-1.1KLB	1.1 KLB [500KG]	20FT [6M]	3.00 [76.2]	1.50 [38.1]	1.93 [49.0]	.96 [24.5]	1.18 [30.0]	.59 [15.0]	.500-20 UNF-2B	2.43 LB [1.1KG]
HI STLB-2.2KLB	2.2 KLB [1000KG]	20FT [6M]	3.00 [76.2]	1.50 [38.1]	1.93 [49.0]	.96 [24.5]	1.18 [30.0]	.59 [15.0]	.500-20 UNF-2B	2.43 LB [1.1KG]
HI STLB-4.4KLB	4.4 KLB [2000KG]	20FT [6M]	3.39 [86.1]	1.69 [42.9]	3.00 [76.2]	1.50 [38.1]	1.18 [30.0]	.59 [15.0]	.625-18 UNF-2B	4.08 LB [1.85KG]
HI STLB-6.6KLB	6.6 KLB [3000KG]	20FT [6M]	3.49 [88.7]	1.75 [44.4]	3.49 [88.7]	1.75 [44.4]	1.57 [40.0]	.79 [20.0]	.750-16 UNF-2B	5.78 LB [2.62KG]
HI STLB-11KLB	11 KLB [5000KG]	20FT [6M]	5.75 [146.1]	2.88 [73.2]	3.59 [91.2]	1.80 [45.6]	2.22 [56.4]	1.11 [28.2]	1.000-12 UNF-2B	11.51 LB [5.22KG]

TOLERANCES: ±0.015 [0.38] UNLESS OTHERWISE STATED

9. SEE SHEET 2 FOR FULL SCALE 2 DIMENSIONAL DROP-IN CAD FILE VIEWS.

8. LOAD SENSOR OPERATING TEMPERATURE RATING IS -20°C TO +65°C. USAGE OF LOAD SENSOR AT TEMPERATURES BELOW -20°C REQUIRES THAT THE LOAD SENSOR AND CABLE BE TEMPERATURE CONTROLLED.

7. LOAD SENSOR IS STAINLESS STEEL 17-4PH (1.4548).

6. CABLE IS SHIELDED, 6 CONDUCTOR. CABLE SHIELD IS FLOATING. SEE TABLE FOR CABLE LENGTHS.

5. C2 WIRE COLOR CODE FLAG LABEL IS LOCATED APPROXIMATELY 10 INCHES [254MM] FROM END OF CABLE.

- EXCITATION + RED
- EXCITATION - BLACK
- SIGNAL + GREEN
- SIGNAL - WHITE
- C2 + GRAY
- C2 - VIOLET
- SHIELD YELLOW

4. CABLE WIRE ENDS ARE STRIPPED BACK 0.5 INCHES [12.7MM] AND TINNED. CABLE JACKET IS STRIPPED BACK APPROXIMATELY 5 INCHES [127MM].

3. LOCATION OF MODEL/SERIAL NUMBER LABEL.

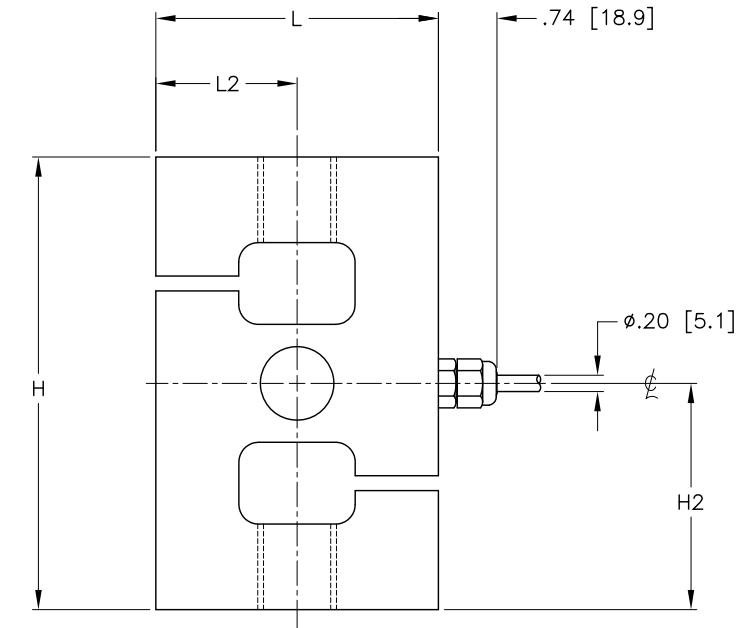
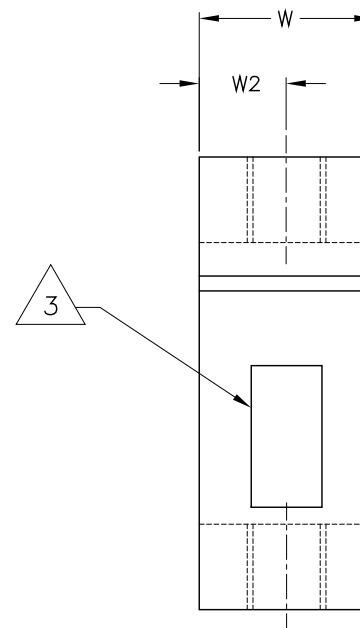
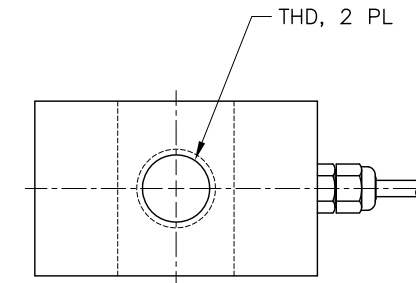
2. THIS DRAWING IS SUBJECT TO CHANGE WITHOUT NOTICE.

1. RATED OUTPUT: 2mV/V ±5%.

NOTES: UNLESS OTHERWISE SPECIFIED

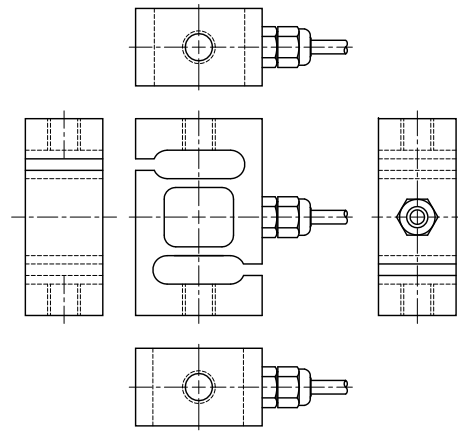
PROPRIETARY NOTICE
 ALL DATA AND INFORMATION CONTAINED IN OR DISCLOSED BY THIS DOCUMENT IS CONFIDENTIAL AND PROPRIETARY INFORMATION OF HARDY PROCESS SOLUTIONS INC. AND ALL RIGHTS THEREIN ARE EXPRESSLY RESERVED. BY ACCEPTING THIS MATERIAL THE RECIPIENT AGREES THAT THIS MATERIAL AND THE INFORMATION CONTAINED THEREIN IS HELD IN CONFIDENCE AND IN TRUST AND SHALL NOT BE USED, COPIED, REPRODUCED IN WHOLE OR IN PART, NOR ITS CONTENTS REVEALED IN ANY MANNER TO OTHERS, EXCEPT TO MEET THE SPECIFIC PURPOSE FOR WHICH IT WAS DELIVERED.

REV.	ECO/DDC	DESCRIPTION	DATE	DRAFT	CHECK	APV'D
A	----	RELEASED.	09-24-14	V.J.C.	N.H.S.	E.J.

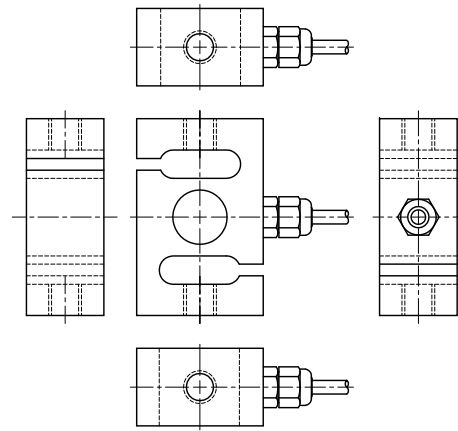


ITEM	QTY	PART NUMBER	DESCRIPTION	COMMENTS
		0588-0153	OUTLINE DRAWING, LOAD SENSOR, HI STLB SERIES	
PARTS LIST				
UNLESS OTHERWISE SPECIFIED DIMENSIONS ARE IN INCHES [MM]		CONTRACT NO.		
TOLERANCES ARE: DECIMALS: .XX = ±0.015 [.38] .XXX = ±0.015 [.38] ANGLES: ±0°, 30'		APPROVALS		
MATERIAL		DRAWN V. CHULA	DATE 09-08-14	HARDY PROCESS SOLUTIONS TITLE OUTLINE DRAWING, LOAD SENSOR, HI STLB SERIES
FINISH		CHECKED N. SCHERRER	DATE 09-23-14	
DO NOT SCALE DRAWING		APPROVED E. JAMES	DATE 09-24-14	
		ISSUED V. CHULA	DATE 09-24-14	
		PRODUCTION	DATE	SIZE D
				FSCM 21316
				DRAWING NO. 0588-0153
				REV. A
				FILE NAME: 588153A1.DWG
				SCALE: NONE
				SHEET 1 OF 2

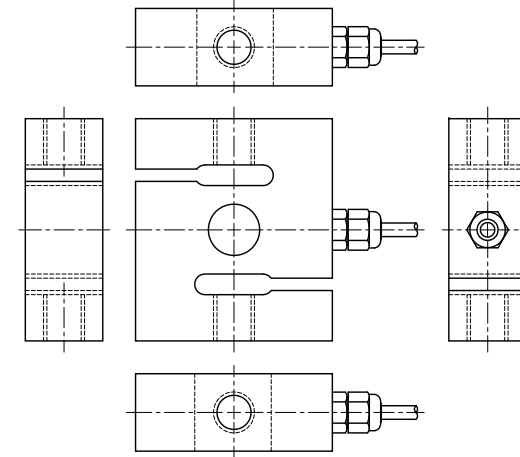
HI STLB-220LB, 440LB & 1.1KLB



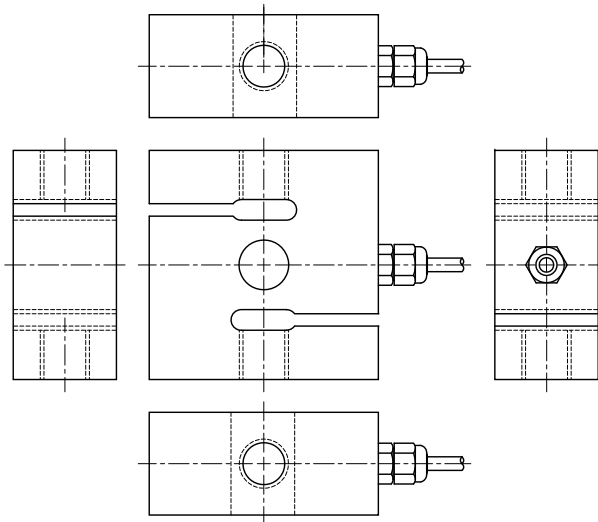
HI STLB-2.2KLB



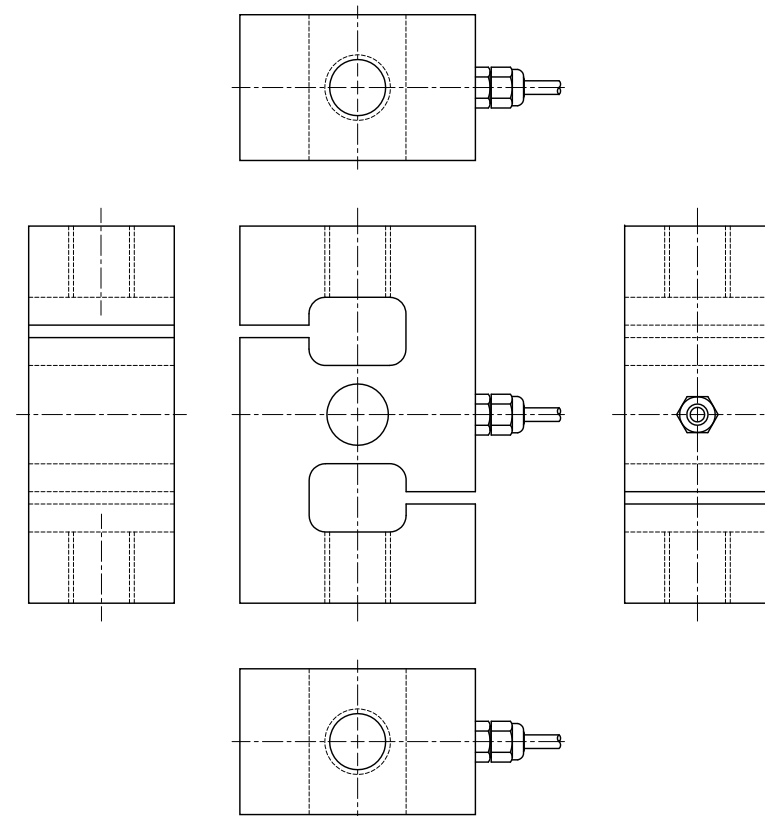
HI STLB-4.4KLB



HI STLB-6.6KLB



HI STLB-11KLB



DROP-IN CAD FILE VIEWS



TITLE
 OUTLINE DRAWING, LOAD SENSOR,
 HI STLB SERIES

SIZE	FSCM	DRAWING NO.	REV.
D	21316	0588-0153	A
FILE NAME: 588153A1.DWG		SCALE: NONE	SHEET 2 OF 2

