

# Hardy Enviro™ Bench Scales

## Applications

### PROCESS WEIGHING

- *Minor Ingredients or Hand-Add applications*
- *Small Batch Reactor Applications in Chemical/Biochemical*
- *Product Inspection: Checkweighing,*
- *Piece Count, Portion Control*
- *Shipping*



## Features

### Sanitary Washdown

- *304 Stainless Steel base and platter*
- *IP67 Rated Load Cell*
- *Closed corners on platform cover*
- *Withstands high pressure and high temperatures*

### HARDY Load Sensor

- *Stainless Steel*
- *Corner adjusted*

### Capacities from 2 lbs to 100 lbs

### Sizes from 10" x 10" to 18" x 18"

### NTEP Certification

### Overload Protection

- **300% R.O.\* Overload**
- **100% R.O. End Loading**
- **100% R.O. Corner Loading**

(\*Rated Output)

The Hardy Process Solutions Enviro™ bench scale meets the needs of the food and chemical industries for sanitary scales that withstand high-pressure, high-temperature washdown environments.

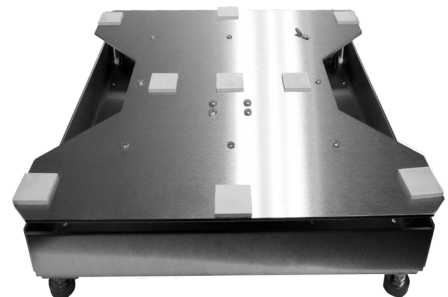
All Hardy Enviro Scales come standard in 10"x10", 12"x12" and 18"x18" and range in capacity from 2 lbs – 100 lbs (0.90 kg to 45.4 kg).

Made of 304 stainless steel and featuring an IP67 rated load cell, the Enviro washdown bench scales are designed for easy cleaning and sanitizing. Welds are continuous, which prevents processing materials and moisture from accumulating and forming colonization points for harmful bacteria like Salmonella, E. Coli, and Listeria Monocytogenes.

Closed corners on the platform cover prevent splash collection of water or processing materials inside the scale. Busing and spacers are used to eliminate lap joints and facilitate quick and easy cleaning.

The ultra-smooth stainless platter resists surface penetration and is easy to clean, adhering to the AMI's strict standards for safety in RTE areas and other production applications. The superior sanitary design and durable stainless steel construction of the Enviro™ washdown bench scales are a perfect foundation for a reliable sanitary bench scale configuration.

At Hardy, we believe that industrial weighing systems should be EASY to engineer and to operate. Simplicity drives the LEAST TOTAL COST. Want MORE PRODUCTIVITY at the LEAST TOTAL COST to own? Call Hardy to discover how today!



## COMPONENTS TO COMPLETE YOUR HARDY SYSTEM

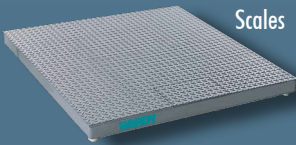
### Hardy Floor Scales and Load Points

Hardy carries a wide variety of strain gauge load points and scale mounts to accommodate your application requirements.

ADVANTAGE Series with C2 Calibration



Bench & Floor Scales



### Weighing Instruments Dedicated to Your Applications

Controllers, Weigh Modules, Weight Processors & Transmitters

Allen-Bradley® Compatible Plug-in Weigh Scales



HI 3000 & HI 4000 Controllers and HI 6000 Series Weight Processors



## Hardy Enviro Bench Scale

### Specifications

#### IP Rating:

- IP67

#### Load Cell Type:

- Stainless Steel, Potted

#### Base Construction:

- 304 Stainless Steel

#### Platter Construction:

- 304 Stainless Steel

#### Capacity Range:

- 2lb to 100lb

#### Minimum Overload Protection:

- 300% Rated Capacity

#### Minimum End Loading Protection:

- 100% Rated Capacity

#### Minimum Corner Loading Protection:

- 100% Rated Capacity

#### Legal for Trade Rating:

- NTEP

#### Resolution:

- 5,000 divisions of full scale

#### Sanitary Specification:

- Follows sanitary specifications for processing equipment developed by the American Meat Institute (AMI)

#### Standard Sizes:

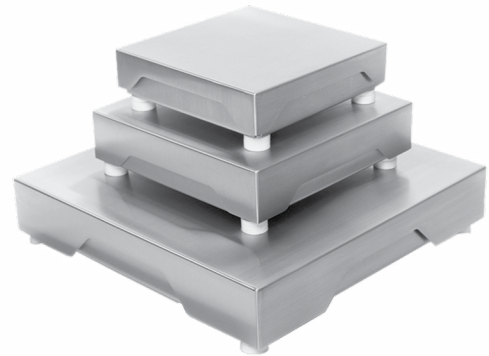
- 10" x 10" x 2.89" H
- 12" x 12" x 3.10" H
- 18" x 18" x 3.87" H

#### Shipping Weight

- 10" x 10": 25 lbs (11.34kg)
- 12" x 12": 38 lbs (17.2 kg)
- 18" x 18": 59 lbs (26.8 kg)

### Standard Sizes and Capacities

Model #	Platter Size	Capacity
HIWDPS-1010-0002	10" x 10"	2 lb
HIWDPS-1010-0006	10" x 10"	6 lb
HIWDPS-1010-0010	10" x 10"	10 lb
HIWDPS-1010-0025	10" x 10"	25 lb
HIWDPS-1212-0030	12" x 12"	30 lb
HIWDPS-1212-0050	12" x 12"	50 lb
HIWDPS-1818-0050	18" x 18"	50 lb
HIWDPS-1818-0100	18" x 18"	100 lb



**HARDY**  
**PROCESS SOLUTIONS**  
 Measurement • Automation • Productivity

### Hardy Process Solutions

10075 Mesa Rim Road  
 San Diego, CA 92121  
 tel. +1-858-278-2900  
 tel. 800-821-5831  
 fax +1-858-278-6700

www.hardysolutions.com

hardyinfo@hardysolutions.com



ENVIROBEN1217  
 0400-0036-01C

### Visit our website for:

- full product specifications
- ordering information
- application notes
- technical description
- operator's manual

www.hardysolutions.com  
 or call us: 800-821-5831  
 +1-858-278-2900

All information within is subject to change without notice. C2, INTEGRATED TECHNICIAN and ADVANTAGE are registered trademarks of Hardy Process Solutions, Inc.. Allen-Bradley, CompactLogix, MicroLogix and Encompass are trademarks of Rockwell Automation, Inc. All other trademarks or registered trademarks are the property of their respective owners.

www.hardysolutions.com • 800.821.5831