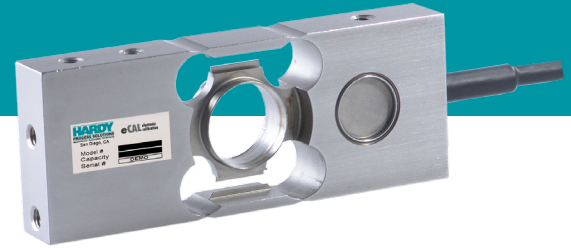


PERFORMANCE - SINGLE POINT SERIES

Single Point Hermetic - SPH03C-SS



The Hardy Process Solutions Performance SPH03C-SS Series of single point load cells are designed for the OEM, conveyor and bench scale markets which require a low sensitivity to off center loads. They are built to perform in harsh environments found in the food, chemical and allied industries. They are stainless steel construction with Hardy's industry leading C2® calibration capabilities.

The SPH03C is available in capacities from 6Kg to 60Kg (13.2 to 132 lbs). They are environmentally protected to **IP68** and come with 6 meters (19ft) of cable. They are waterproof, oil and corrosion proof, suitable for use in all kinds of environments.

These single point hermetic sensors offer easy installation and flexible application. They are suitable for platform scale, packing scales and other electronic weighing applications.

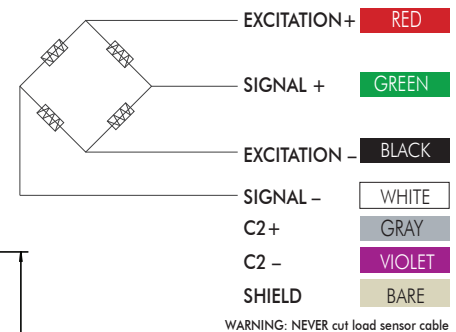
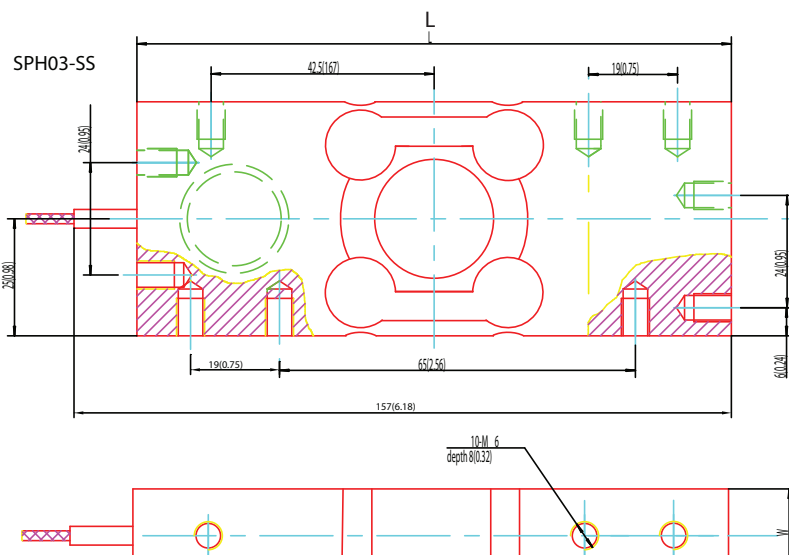
| SINGLE POINT HERMETIC | | | |
|-----------------------|----------|----|------------|
| MODEL# | CAPACITY | | MOUNT# |
| | lbs | Kg | |
| SPH03C-SS-6KG | 13.2 | 6 | not needed |
| SPH03C-SS-12KG | 26.4 | 12 | |
| SPH03C-SS-15KG | 33 | 15 | |
| SPH03C-SS-30KG | 66 | 30 | |
| SPH03C-SS-60KG | 132 | 60 | |

ORDERING INFORMATION

No mounting hardware needed.
 Minimum order quantity 10 units.

| SPECIFICATIONS | SPH03C-SS |
|-------------------------|--------------------|
| Rated Output (ES) | 2 ± 0.2mV/V |
| Combined Error | < ± 0.020 % R.O. |
| Zero Balance | < ± 1.0 % R.O. |
| Creep @ 30 Min. | < ± 0.016 % R.O. |
| Temp Effect Output | < ± 0.019 % R.O./C |
| Temp Effect Sensitivity | < ± 0.011 % R.O./C |
| Input Resistance | 400 ± 20 ohm |
| Output Resistance | 351 ± 2 ohm |
| Insulation Resistance | > 5000 Mohm |
| Excitation | 5 - 12 vdc |
| Safe Load Limit | 150 % Emax |
| Ultimate Load | 300 % Emax |
| Protection class | IP68 |
| Warranty | Two years |

PERFORMANCE SPH03C-SS Outline



WARNING: NEVER cut load sensor cable

| Capacity | L | H | W |
|--------------|-----------|----------|------------|
| 6,12,15,30kg | 130(5.12) | 50(1.96) | 18.5(0.73) |
| 60kg | 130(5.12) | 50(1.96) | 23.5(0.92) |

All information and drawings in this brochure are subject to change without notice. Consult website for latest specifications.