

PERFORMANCE S-BEAM

ST02C-AS series

The Hardy PERFORMANCE® ST02C-AS load cells offer high accuracy and reliable performance with Hardy's industry leading C2® Electronic Calibration technology.

They are available in capacities from 25 Kg to 2 Metric Tons (55lbs to 4.4Klbs), with mounting hardware available separately. The ST02C-AS load cells are alloy steel construction, oil proof, waterproof and non-corrosive, making them suitable for all kinds of environments. They have a protection class rating of **IP67**.

The ST02C-AS series offer an S Beam design, tension and/or compression loading and easy installation. They are suitable for crane scales, mechanical conversion scales, hopper scales and other electronic weighing applications. ST02C-AS comes with 3m (9 ft) of cable for 25Kg or 6m (19ft) of cable for over 25 Kg.



S-BEAM			
MODEL#	lbs	CAPACITY Kg/MT	MOUNT# MST02C-
ST02C-AS-25KG	55	25	AS-25-50KG
ST02C-AS-50KG	110	50	
ST02C-AS-100KG	220	100	
ST02C-AS-200KG	440	200	AS-200KG-1MT
ST02C-AS-500KG	1.1K	500	
ST02C-AS-1MT	2.2K	1MT	
ST02C-AS-1.5MT	3.3K	1.5MT	AS-1.5MT
ST02C-AS-2MT	4.4K	2MT	

ORDERING INFORMATION

ST02C-AS requires rods or appropriate mounting hardware, available separately.

See appropriate mount models in table and next page.

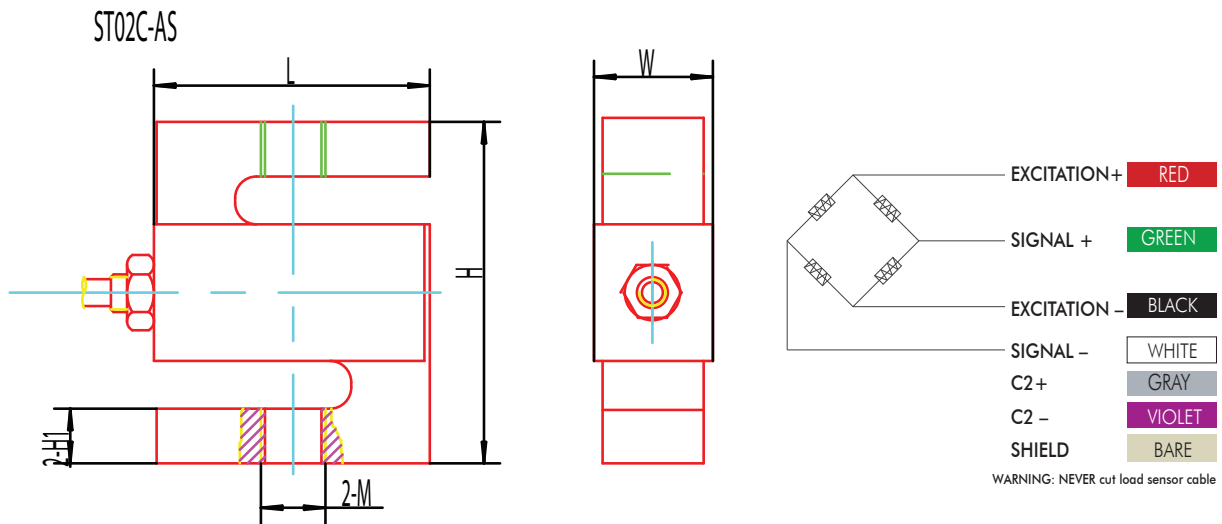
SPECIFICATIONS

Rated Output (ES)	2 ± 0.004mV/V
Combined Error	< ± 0.02 % R.O.
Zero Balance	< ± 1.5 % R.O.
Creep @ 30 Min.	< ± 0.016 % R.O.
Temp Effect Output	< ± 0.015 % R.O./C
Temp Effect Sensitivity	< ± 0.011 % R.O./C
Input Resistance	350 ± 3.5 ohm
Output Resistance	351 ± 2.0 ohm
Insulation Resistance	> 5000 Mohm
Excitation	5 - 12 vdc
Safe Load Limit	150 % Emax
Ultimate Load	300 % Emax
Protection Class	IP67
Warranty	Two years

All information and drawings on these pages are subject to change without notice. Consult website for latest specifications.



PERFORMANCE ST02C-AS Outline



All information and drawings on these pages are subject to change without notice. Consult website for latest specifications.

Capacity	H	L	W	H1	M
25-50kg	76.2(3.0)	50.8(2.0)	16.1(0.63)	15.7(0.62)	M8
0.1-0.15t	76.2(3.0)	50.8(2.0)	22.4(0.88)	15.3(0.60)	M10*1.5
0.2-0.75t	76.2(3.0)	50.8(2.0)	22.4(0.88)	13.6(0.54)	M12*1.75
1-1.5t	76.2(3.0)	50.8(2.0)	28.8(1.13)	12.1(0.48)	M12*1.75
2-5t	101.6(4.0)	76.2(3.0)	28.8(1.13)	20(0.79)	M20*1.5

MOUNT MST02C-AS

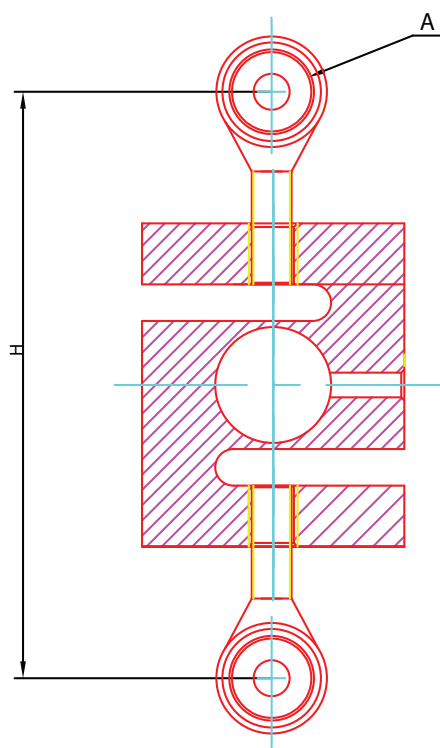
Matched with the ST02C-AS S-Beam 25Kg to 2 MT capacity load cells, these mounts are suitable for hybrid scales, crane scales, packaging scales, hopper scales and other electronic weighing devices.





MST02C-AS mount outline

MST02-C-AS Outline Dimension mm(inch)



Capacity	H	Part Number
25-50 kg	128.8mm (5.07 in)	MST02-AS-25-50KG
100-150 kg	141.6mm (5.57 in)	MST02-AS-100-150KG
200kg-1mt	160mm (6.3 in)	MST02-AS-200KG-1MT
1.5 mt	178mm (7.01 in)	MST02-AS-1.5MT
2-3 mt	217.6 (8.57)	MST02-AS-2MT-3MT

All information and drawings on these pages are subject to change without notice. Consult website for latest specifications.